

A WDT Marine Weather Warning has been issued for Galveston Anchorage

Good Day,



**Galveston Anchorage**  
WDT Marine Weather Warning, expires at Thursday, December 7, 2017 4:00 pm CST

A WeatherOps Forecaster has issued a WDT Marine Weather Warning for WGMA's Galveston Anchorage at Wednesday, December 6, 2017 3:00 am CST through Thursday, December 7, 2017 4:00 pm CST. [Monitor in real-time on WeatherOps Map for WGMA.](#)



[forecaster@weatherops.com](mailto:forecaster@weatherops.com)

© Weather Decision Technologies, Inc.

**Elevated Winds and Seas through Friday Afternoon**

Threat Time: through Friday 1800 CST

Primary Impacts

Winds: NNE to NE 25-35 kts

Gusts: 40+ kts

Nearshore Seas: 6-10 ft

Deepwater Seas: 10-16 ft

The latest surface observations across the Gulf of Mexico indicate that a cold front has cleared the Warning area to the east. As high pressure builds into the region from the northwest, elevated wind and sea state conditions can be expected for much of today, Thursday, and into Friday before beginning to decrease during the evening. A prolonged period of strong to near gale north-northeast winds can be expected, with occasional periods of gale force conditions possible as well. Seas will also continue to build over the next couple of days, peaking at 10-16 feet for deepwater locations, and 6-10 feet closer to shore.

An update statement with the latest information will likely be issued around Thursday 1600 CST.

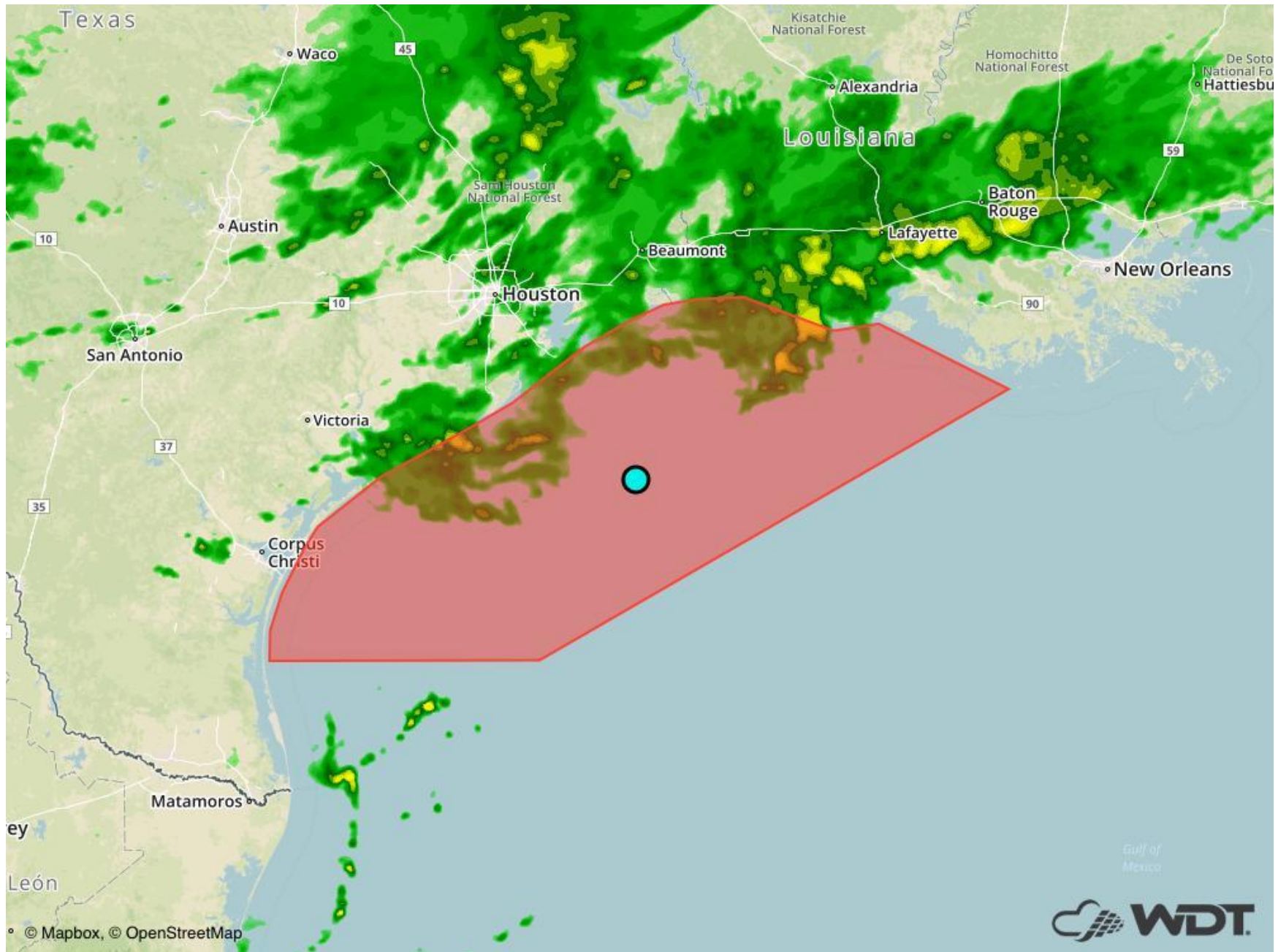
**A WDT Marine Weather Warning has been issued for Offshore Galveston Lightering Area**

Good Day,



**Offshore Galveston Lightering Area  
WDT Marine Weather Warning, expires at Thursday, December 7, 2017 4:00 pm CST**

A WeatherOps Forecaster has issued a WDT Marine Weather Warning for WGMA's Offshore Galveston Lightering Area at Wednesday, December 6, 2017 3:00 am CST through Thursday, December 7, 2017 4:00 pm CST. [Monitor in real-time on WeatherOps Map for WGMA.](#)



[forecaster@weatherops.com](mailto:forecaster@weatherops.com)

© Weather Decision Technologies, Inc.

**Elevated Winds and Seas through Friday Afternoon**

Threat Time: through Friday 1800 CST

Primary Impacts

Winds: NNE to NE 25-35 kts

Gusts: 40+ kts

Nearshore Seas: 6-10 ft

Deepwater Seas: 10-16 ft

The latest surface observations across the Gulf of Mexico indicate that a cold front has cleared the Warning area to the east. As high pressure builds into the region from the northwest, elevated wind and sea state conditions can be expected for much of today, Thursday, and into Friday before beginning to decrease during the evening. A prolonged period of strong to near gale north-northeast winds can be expected, with occasional periods of gale force conditions possible as well. Seas will also continue to build over the next couple of days, peaking at 10-16 feet for deepwater locations, and 6-10 feet closer to shore.

An update statement with the latest information will likely be issued around Thursday 1600 CST.