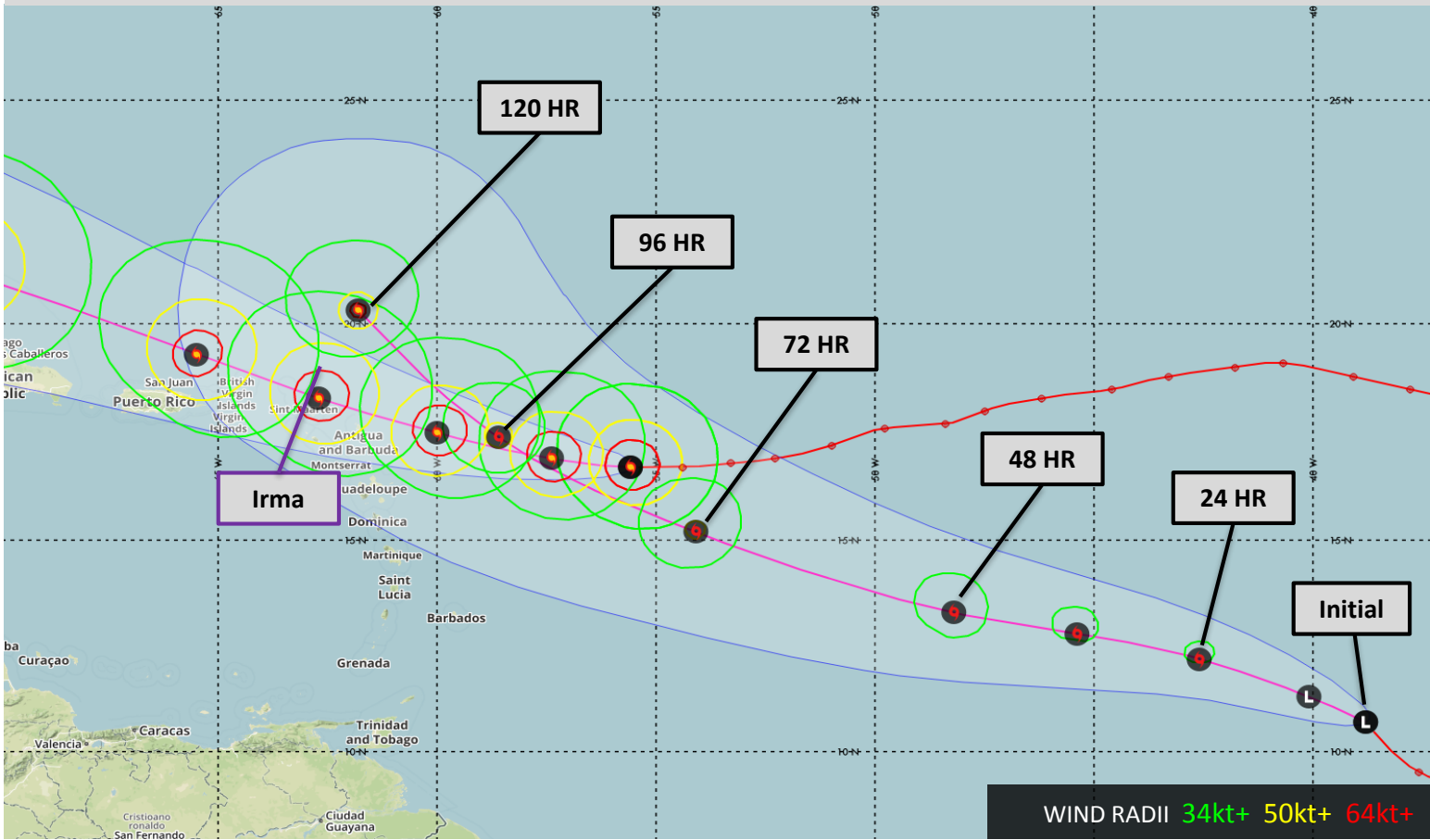


**Tropical Disturbance Invest 94L Advisory #4**

Effective: September 5, 2017 0900 UTC

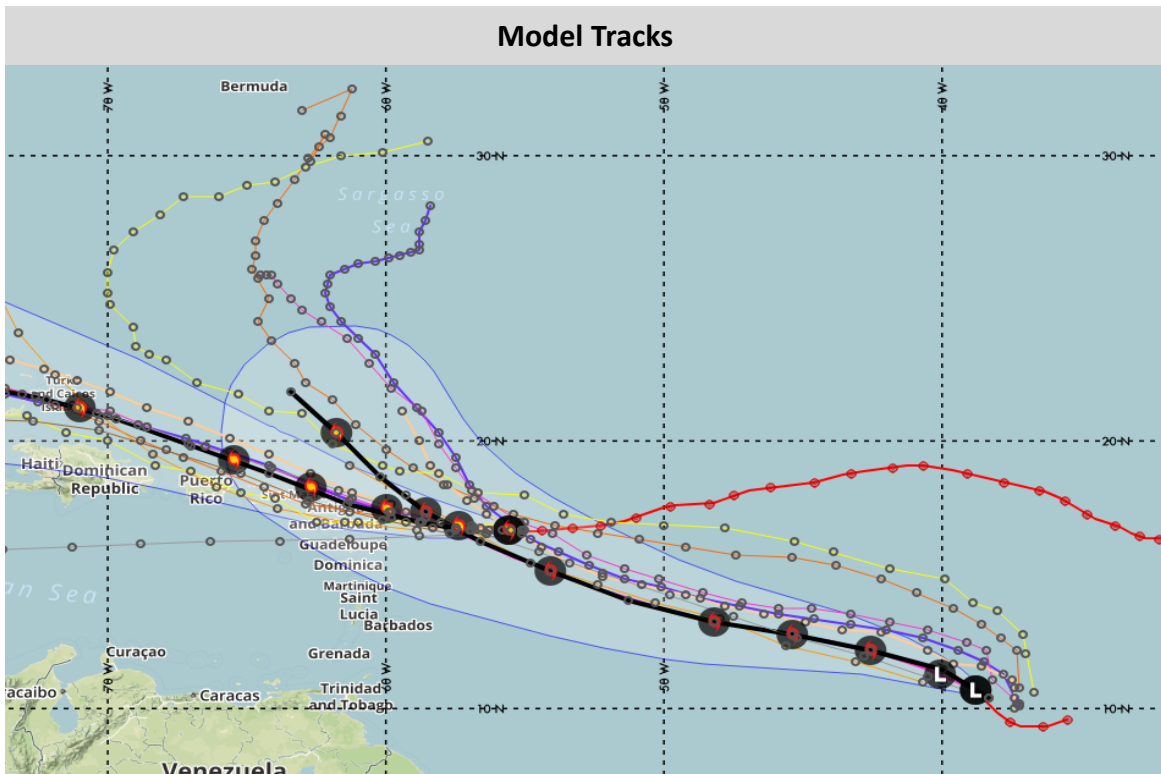
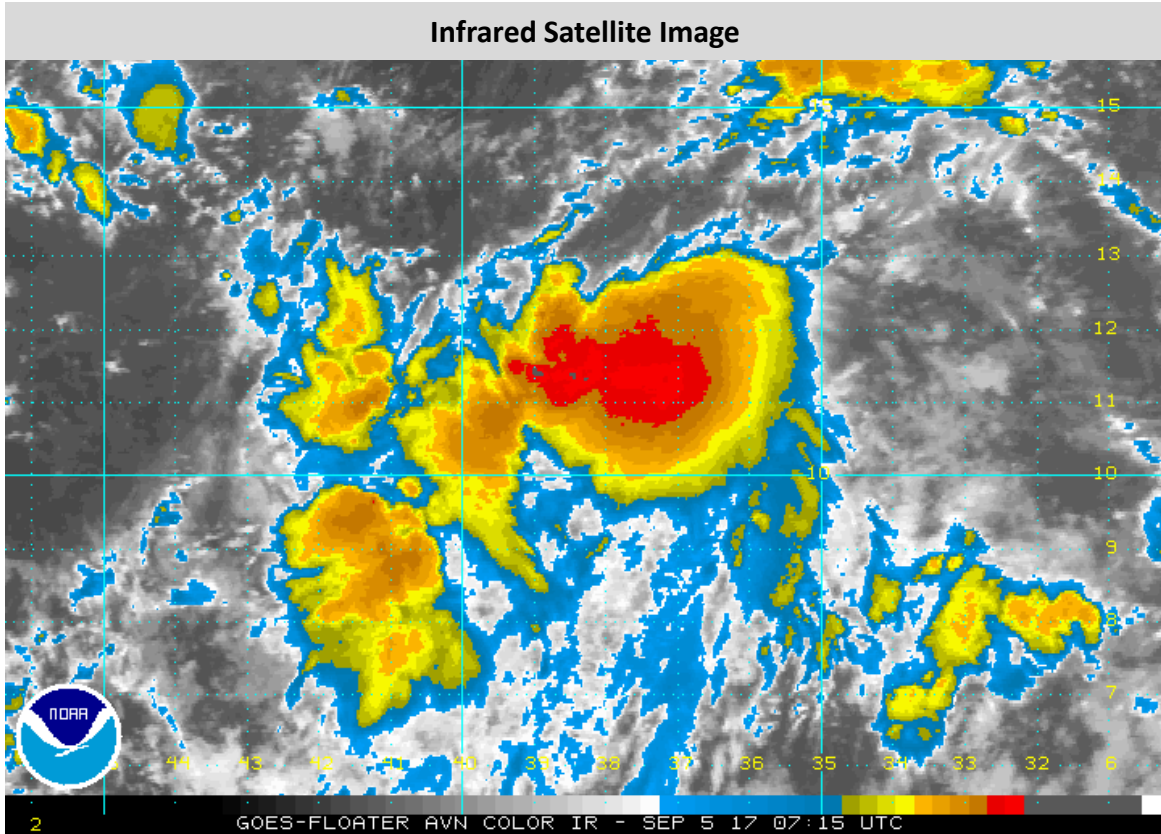
<b>Estimated Center Position</b>	10.7N 38.8W (882 nm SW of Cape Verde)
<b>Current Movement</b>	WNW at 10 knots
<b>Sustained Winds/Gusts</b>	25 knots / 35 knots
<b>Threat of TD or TS Development</b>	90%
<b>Forecast Discussion</b>	Latest satellite imagery suggests Invest 94L is becoming better organized with more robust convection perhaps beginning to consolidate atop a low-level circulation. Guidance is in good agreement with slow but steady intensification through the next several days and a depression could form later today or tonight. The forecast track remains relatively unchanged and 94L will continue west-northwestward through 96 hours. Thereafter, 94L should re-curve to the northwest and north as an approaching trough arrives from the west.


**WDT FORECAST TRACK**



**WDT Forecast Positions and Max Winds**

Track Forecast Confidence: Below Average				Intensity Forecast Confidence: Below Average			
Date	Forecast Time/Hour	Position	Sustained Winds	Saffir-Simpson Scale			
Tue	Sep 5	0900 UTC	Initial	10.7N 38.8W	25 KT	30 MPH	N/A
Tue	Sep 5	1800 UTC	12 Hour	11.3N 40.1W	30 KT	35 MPH	TD
Wed	Sep 6	0600 UTC	24 Hour	12.2N 42.6W	35 KT	40 MPH	TS
Wed	Sep 6	1800 UTC	36 Hour	12.8N 45.4W	40 KT	45 MPH	TS
Thu	Sep 7	0600 UTC	48 Hour	13.3N 48.2W	45 KT	50 MPH	TS
Fri	Sep 8	0600 UTC	72 Hour	15.2N 54.1W	50 KT	60 MPH	TS
Sat	Sep 9	0600 UTC	96 Hour	17.4N 58.6W	60 KT	70 MPH	TS
Sun	Sep 10	0600 UTC	120 Hour	20.3N 61.8W	65 KT	75 MPH	CAT 1



 WDT's next advisory will be issued at 1500 UTC