

Tropical Disturbance Invest 95L Advisory #1

Effective: September 5, 2017 0300 UTC

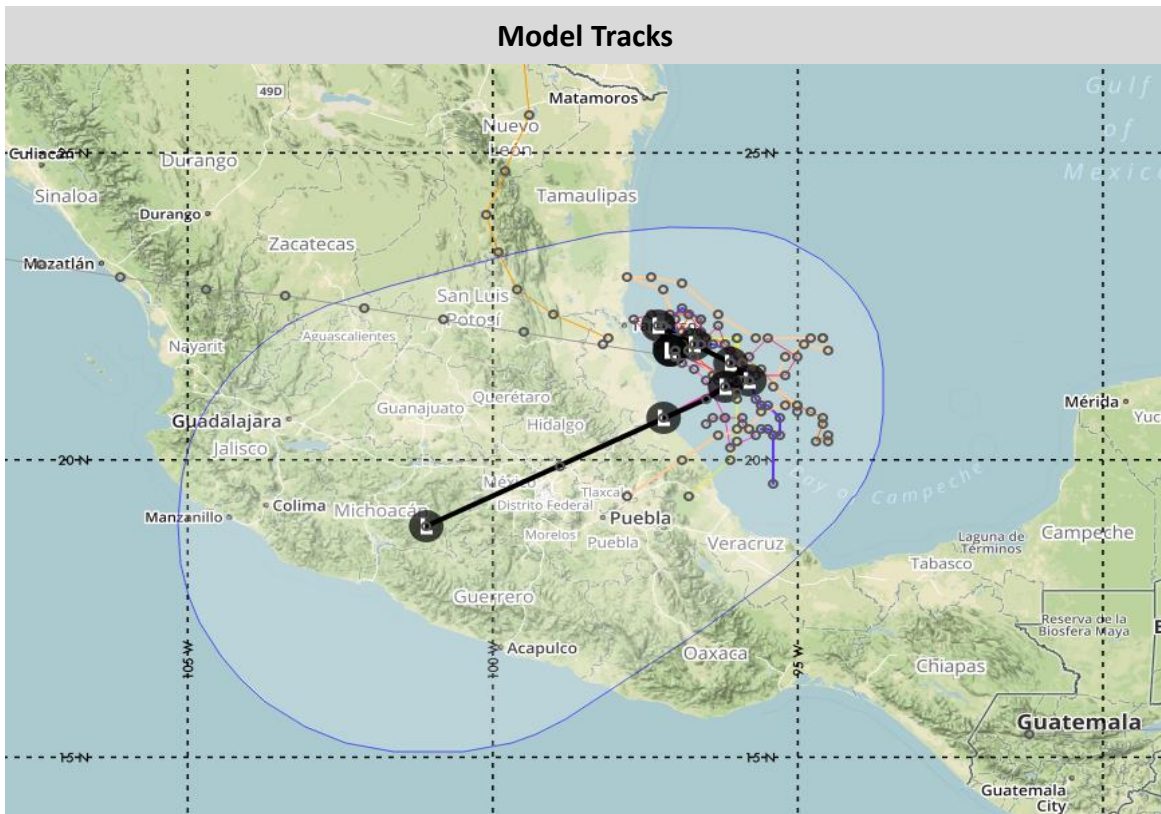
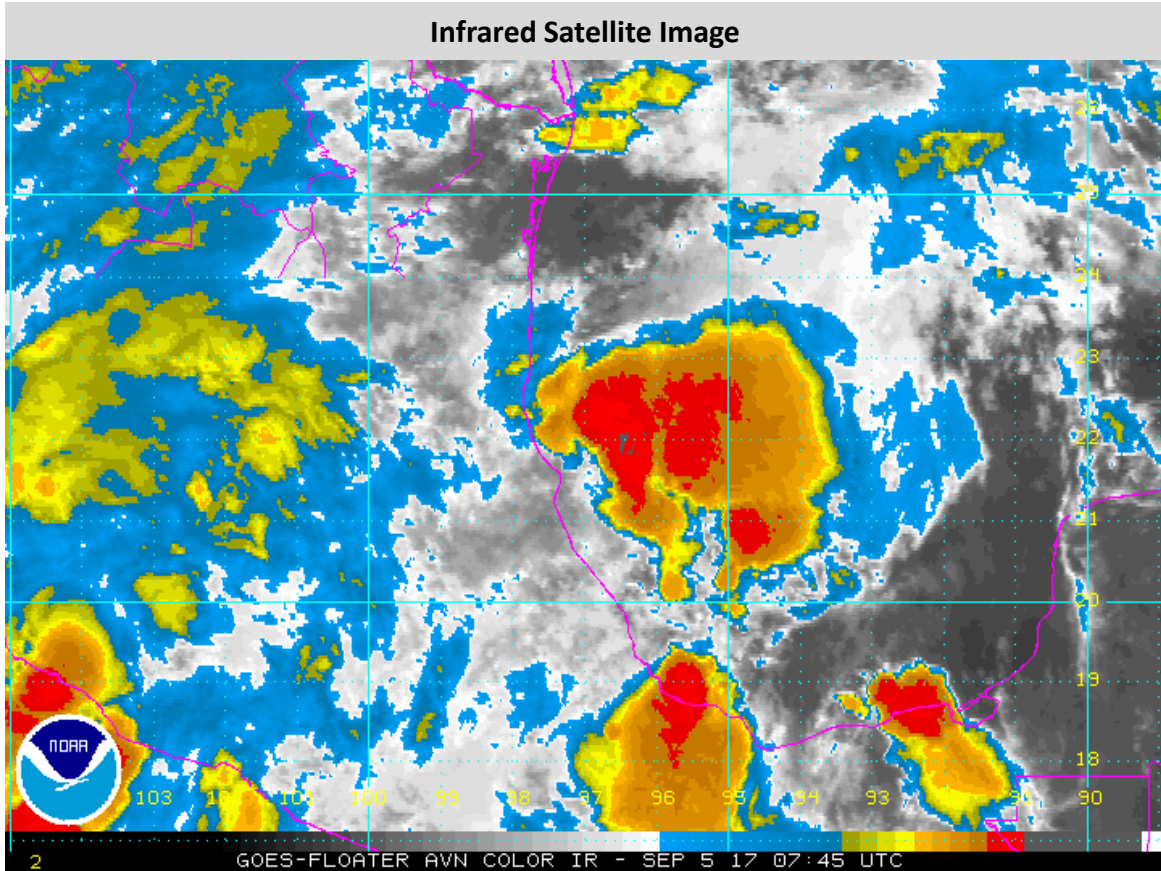
Estimated Center Position	21.8N 97.1W (60 nm SE of Tampico, Mexico)
Current Movement	NNW at 2 knots
Sustained Winds/Gusts	25 knots / 35 knots
Threat of TD or TS Development	60%
Forecast Discussion	Invest 95L has formed a trackable center over the last several hours as showers and thunderstorms continue to flare around a disorganized trough of low pressure. Conditions are forecast to continue to remain only marginally favorable over the next few days across the Bay of Campeche as strong wind shear will remain in place as Invest 95L meanders around the region. Regardless, Invest 95L has a moderate chance for further development over the next few days before tracking into Mexico.


WDT FORECAST TRACK



WDT Forecast Positions and Max Winds

Track Forecast Confidence: Below Average				Intensity Forecast Confidence: Below Average			
Date	Forecast Time/Hour	Position	Sustained Winds	Saffir-Simpson Scale			
Tue	Sep 5	0900 UTC	Initial	21.8N 97.1W	25 KT	30 MPH	N/A
Tue	Sep 5	1800 UTC	12 Hour	22.2N 97.3W	25 KT	30 MPH	N/A
Wed	Sep 6	0600 UTC	24 Hour	21.9N 96.7W	25 KT	30 MPH	N/A
Wed	Sep 6	1800 UTC	36 Hour	21.6N 96.1W	25 KT	30 MPH	N/A
Thu	Sep 7	0600 UTC	48 Hour	21.3N 95.8W	30 KT	35 MPH	TD
Fri	Sep 8	0600 UTC	72 Hour	21.2N 96.2W	30 KT	35 MPH	TD
Sat	Sep 9	0600 UTC	96 Hour	20.7N 97.2W	30 KT	35 MPH	TD
Sun	Sep 10	0600 UTC	120 Hour	18.9N 101.1W	25 KT	30 MPH	TD (DISSIPATING)



 WDT's next advisory will be issued at 2100 UTC