

**Tropical Disturbance Invest 95L Advisory #2**

Effective: September 5, 2017 1500 UTC

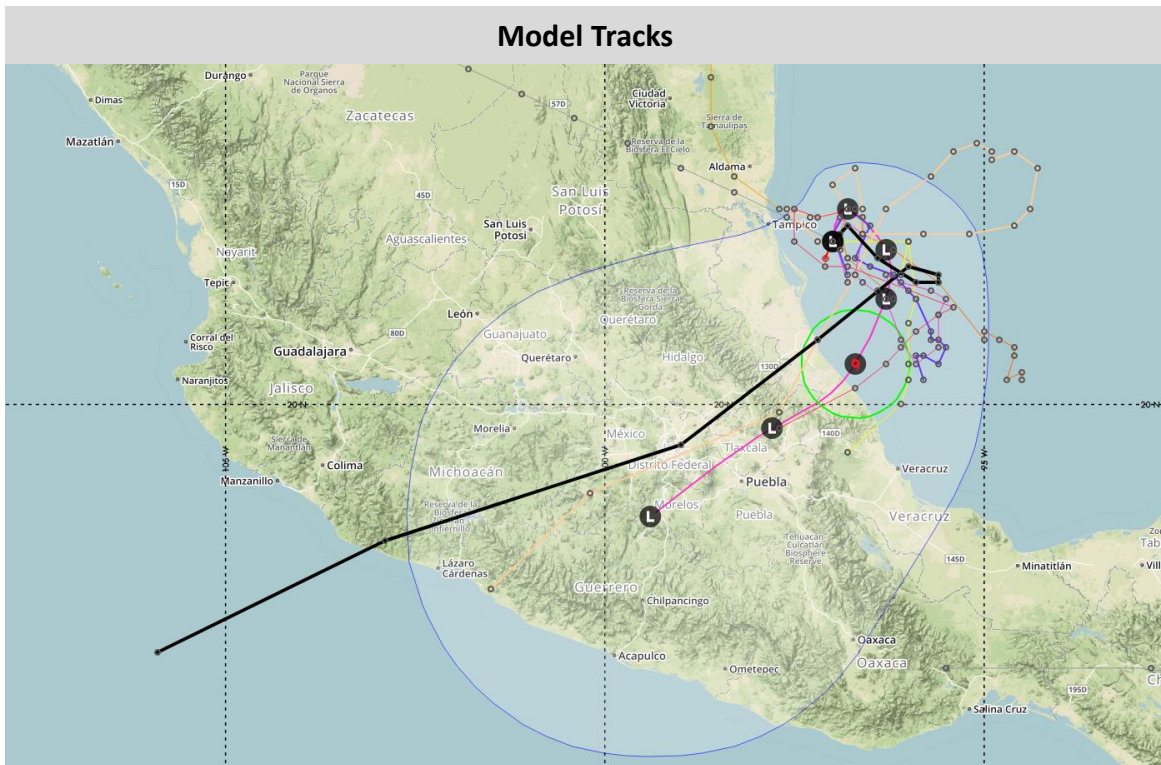
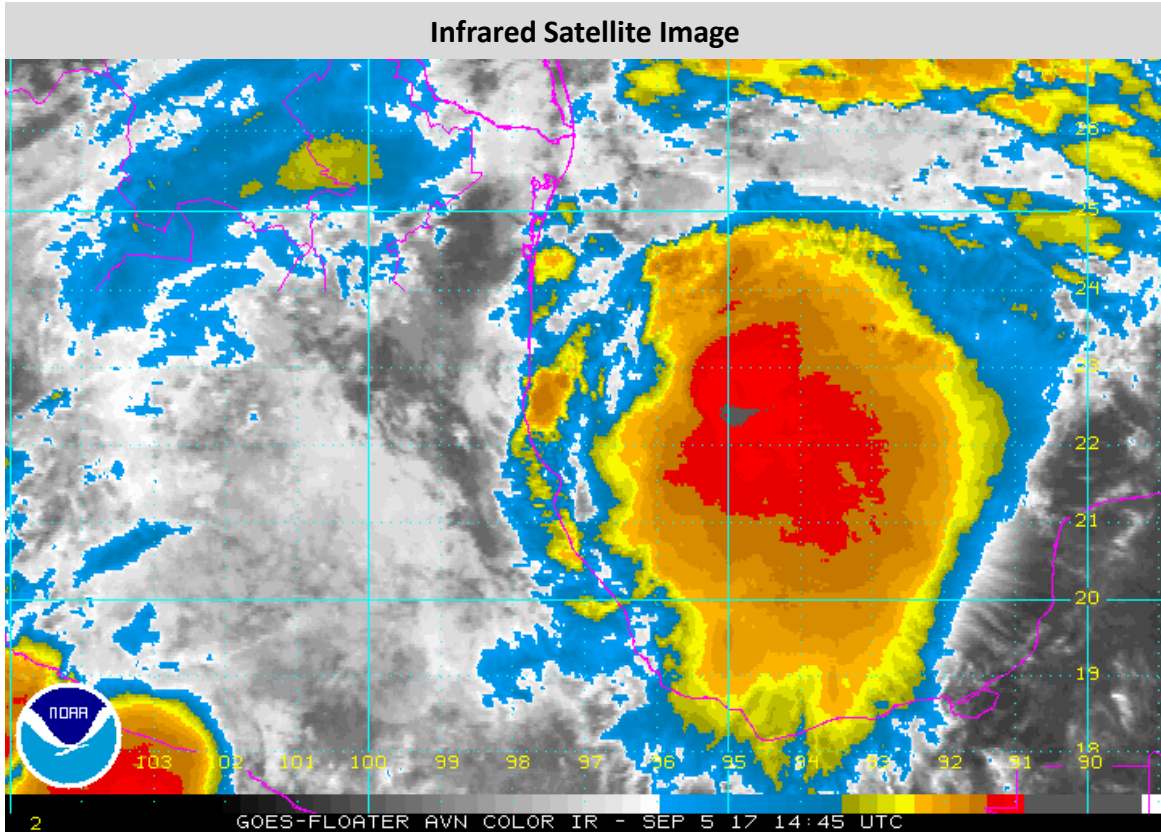
<b>Estimated Center Position</b>	22.0N 97.0W (50 nm SE of Tampico, Mexico)
<b>Current Movement</b>	N at 3 knots
<b>Sustained Winds/Gusts</b>	25 knots / 35 knots
<b>Threat of TD or TS Development</b>	70%
<b>Forecast Discussion</b>	Invest 95L looks fairly organized on satellite, with deep convection starting to circle around a low level circulation. This system will likely be named a depression within the next day, and based on model guidance (as scattered and varied as it is), it will likely become a tropical storm within the next two days. Model guidance is, however, in good agreement that within 3-5 days, this invest will track inland across Mexico. The high terrain of the region will tear apart whatever is left, and cause the system to dissipate.


**WDT FORECAST TRACK**



**WDT Forecast Positions and Max Winds**

Track Forecast Confidence: Below Average				Intensity Forecast Confidence: Below Average			
Date	Forecast Time/Hour	Position	Sustained Winds	Saffir-Simpson Scale			
Tue	Sep 5	1500 UTC	Initial	22.0N 97.0W	25 KT	30 MPH	N/A
Wed	Sep 6	0000 UTC	12 Hour	22.4N 96.8W	25 KT	30 MPH	N/A
Wed	Sep 6	1200 UTC	24 Hour	21.9N 96.3W	30 KT	35 MPH	TD
Thu	Sep 7	0000 UTC	36 Hour	21.3N 96.3W	30 KT	35 MPH	TD
Thu	Sep 7	1200 UTC	48 Hour	20.5N 96.7W	35 KT	40 MPH	TS
Fri	Sep 8	1200 UTC	72 Hour	19.7N 97.8W	30 KT	35 MPH	TD (DISSIPATING)
Sat	Sep 9	1200 UTC	96 Hour	18.6N 99.4W	25 KT	30 MPH	DISSIPATED
-	-	-	-	-	-	-	-



 WDT's next advisory will be issued at 2100 UTC