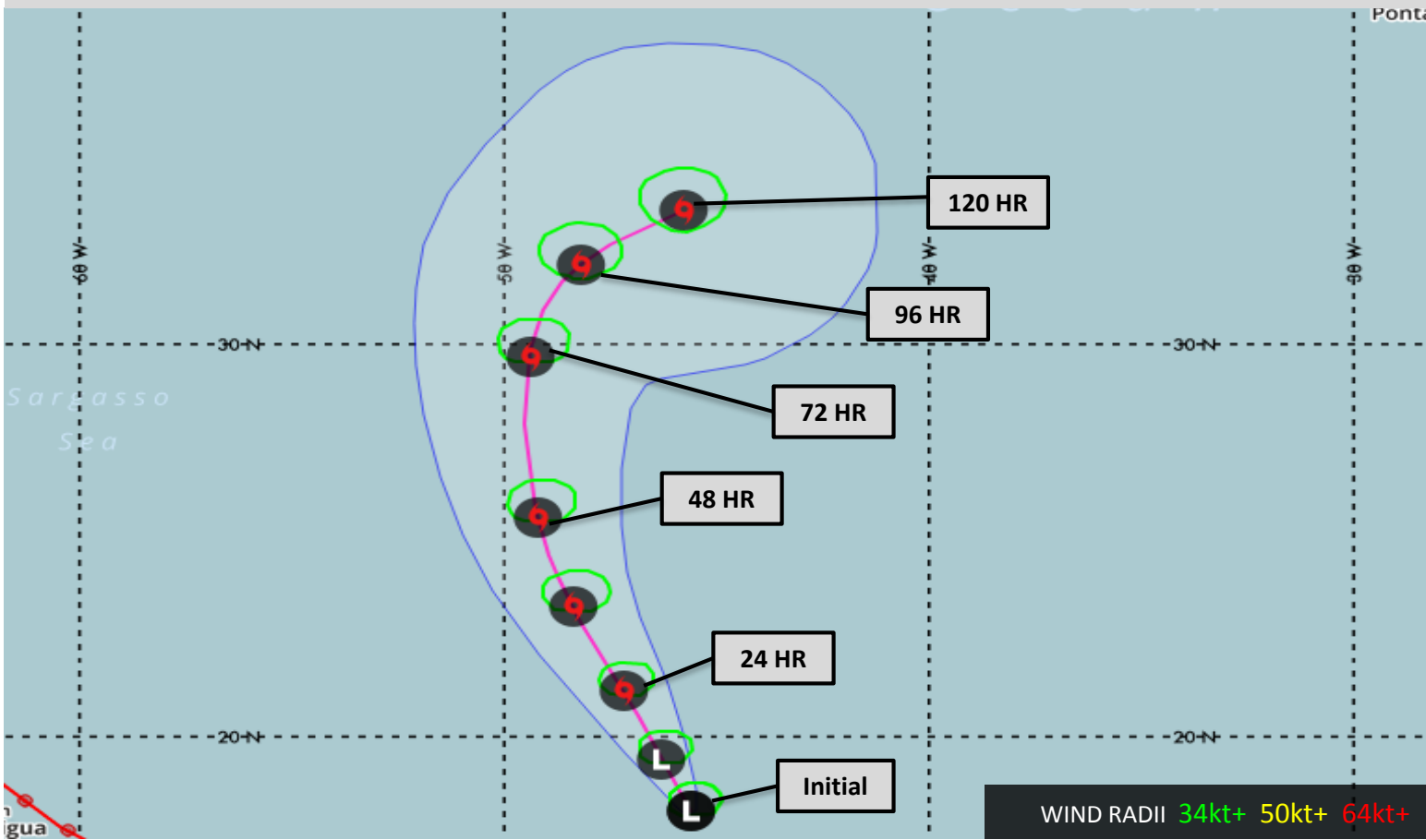


Tropical Disturbance Remnants of Lee Advisory #1

Effective: September 20, 2017 0900 UTC

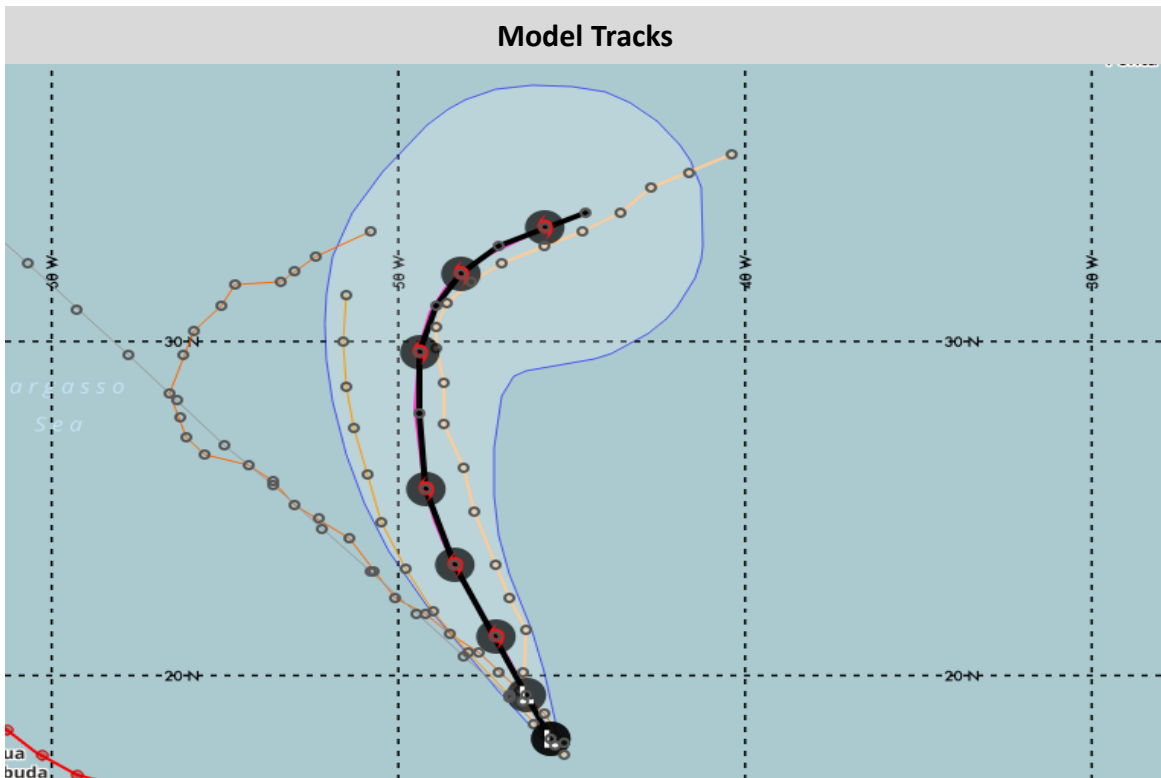
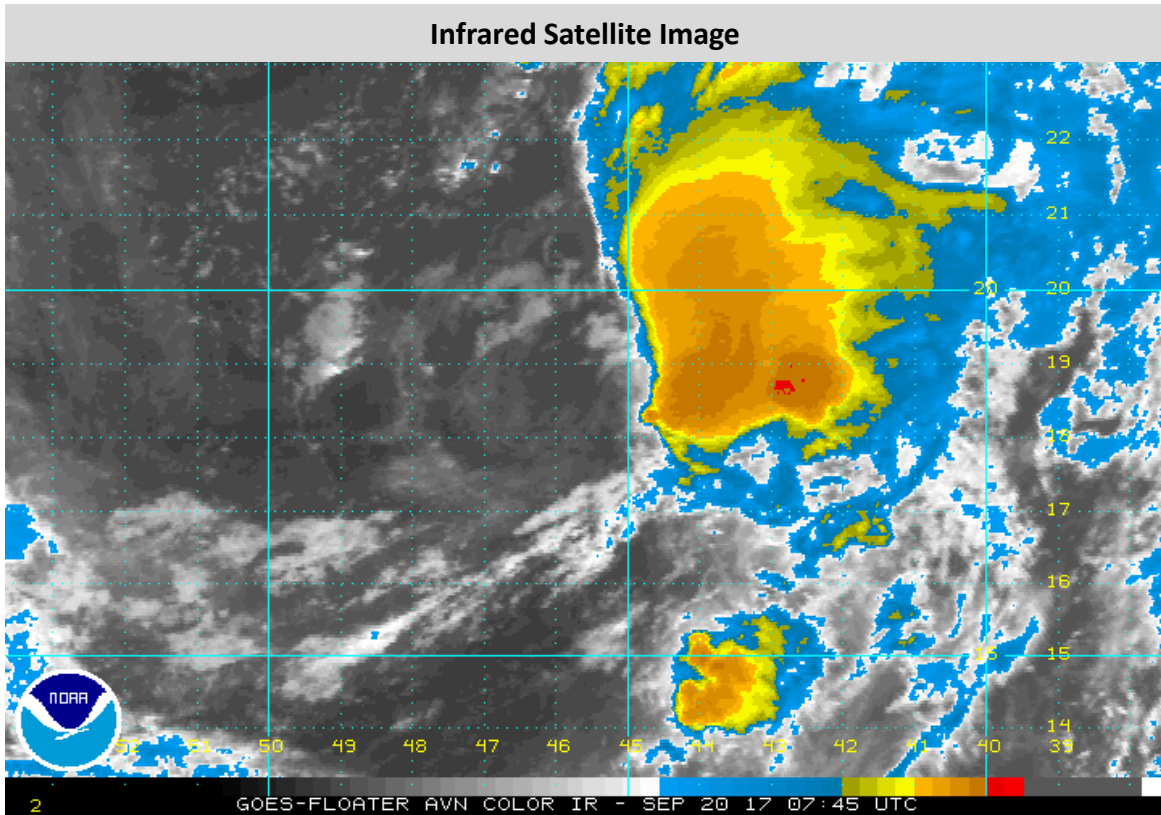
Estimated Center Position	21.8N 97.1W (900 nm E of Antigua)
Current Movement	NNW at 9 knots
Sustained Winds/Gusts	40 knots / 50 knots
Threat of TD or TS Development	50%
Forecast Discussion	Latest satellite imagery shows convection has become a bit more organized near the center of the remnant low of Lee. The threat for regeneration into a tropical cyclone has increased enough to initiate Significant Tropical Disturbance Advisories. An upper-level low pressure over the Atlantic is producing unfavorable wind shear across the region which will limit development potential. Regardless, only slightly more organization of convection over the core of the low will allow for a tropical storm to be identified.


WDT FORECAST TRACK



WDT Forecast Positions and Max Winds

Track Forecast Confidence: Below Average				Intensity Forecast Confidence: Below Average			
Date	Forecast Time/Hour	Position	Sustained Winds	Saffir-Simpson Scale			
Wed	Sep 20	0900 UTC	Initial	18.0N 45.6W	40 KT	45 MPH	N/A
Wed	Sep 20	1800 UTC	12 Hour	19.4N 46.3W	40 KT	45 MPH	N/A
Thu	Sep 21	0600 UTC	24 Hour	21.2N 47.2W	40 KT	45 MPH	TS
Thu	Sep 21	1800 UTC	36 Hour	23.4N 48.4W	40 KT	45 MPH	TS
Fri	Sep 22	0600 UTC	48 Hour	25.7N 49.2W	45 KT	45 MPH	TS
Sat	Sep 23	0600 UTC	72 Hour	29.7N 49.4W	45 KT	45 MPH	TS
Sun	Sep 24	0600 UTC	96 Hour	31.9N 48.3W	45 KT	45 MPH	TS
Mon	Sep 125	0600 UTC	120 Hour	33.2N 45.8W	45 KT	45 MPH	TS



 WDT's next advisory will be issued at 2100 UTC