

A WDT Discussion has been issued for Port of Freeport Fairway Anchorage

Good Day,



Port of Freeport Fairway Anchorage  
WDT Discussion

A WeatherOps Forecaster has issued a WDT Discussion for WGMA's Port of Freeport Fairway Anchorage at Thursday, July 13, 2017 5:00 am CDT. [Monitor in real-time on WeatherOps Map for WGMA.](#)



[forecaster@weatherops.com](mailto:forecaster@weatherops.com)

© Weather Decision Technologies, Inc.

**Gulf of Mexico Weather Synopsis - July 13, 2017**

Winds this morning over the Gulf are generally southeasterly in western and central regions at moderate speeds, and easterly at gentle speeds in the east. Models are showing a weak easterly wave moving across the Gulf over the next few days. Its chief effect will be to increase precipitation chances as it slowly moves westward. The wave should move into the eastern Gulf today, and make the central Gulf by Friday, finally entering western regions by early in the weekend. It should be weakening as it moves west, and should dissipate as it moves ashore over eastern Texas early next week. Wind directions west of the wave will gradually turn to northeasterly at gentle to moderate speeds, then will go back to east to southeast again at gentle to moderate speeds as the wave passes. Winds should be back to their normal patterns by early next week, with south to southeasterly winds in the west at moderate speeds, and east to southeast winds at gentle speeds in the east. Seas will be slight through the period.

ECMWF surface winds, sea-level pressure, and 6-hour precipitation valid 1200 UTC July 13:

<http://metgen->

[images.aws.wdtinc.com.s3.amazonaws.com/images/ecmwf\\_hires/gulf\\_of\\_mexico/2017071300/total\\_precipitation/2017071300\\_f12\\_gulf\\_of\\_mexico\\_total\\_precipitation.gif](http://images.aws.wdtinc.com.s3.amazonaws.com/images/ecmwf_hires/gulf_of_mexico/2017071300/total_precipitation/2017071300_f12_gulf_of_mexico_total_precipitation.gif)

ECMWF surface winds, sea-level pressure, and 6-hour precipitation valid 1200 UTC July 14:

<http://metgen->

[images.aws.wdtinc.com.s3.amazonaws.com/images/ecmwf\\_hires/gulf\\_of\\_mexico/2017071300/total\\_precipitation/2017071300\\_f36\\_gulf\\_of\\_mexico\\_total\\_precipitation.gif](http://images.aws.wdtinc.com.s3.amazonaws.com/images/ecmwf_hires/gulf_of_mexico/2017071300/total_precipitation/2017071300_f36_gulf_of_mexico_total_precipitation.gif)

ECMWF surface winds, sea-level pressure, and 6-hour precipitation valid 1200 UTC July 15:

<http://metgen->

[images.aws.wdtinc.com.s3.amazonaws.com/images/ecmwf\\_hires/gulf\\_of\\_mexico/2017071300/total\\_precipitation/2017071300\\_f60\\_gulf\\_of\\_mexico\\_total\\_precipitation.gif](http://images.aws.wdtinc.com.s3.amazonaws.com/images/ecmwf_hires/gulf_of_mexico/2017071300/total_precipitation/2017071300_f60_gulf_of_mexico_total_precipitation.gif)

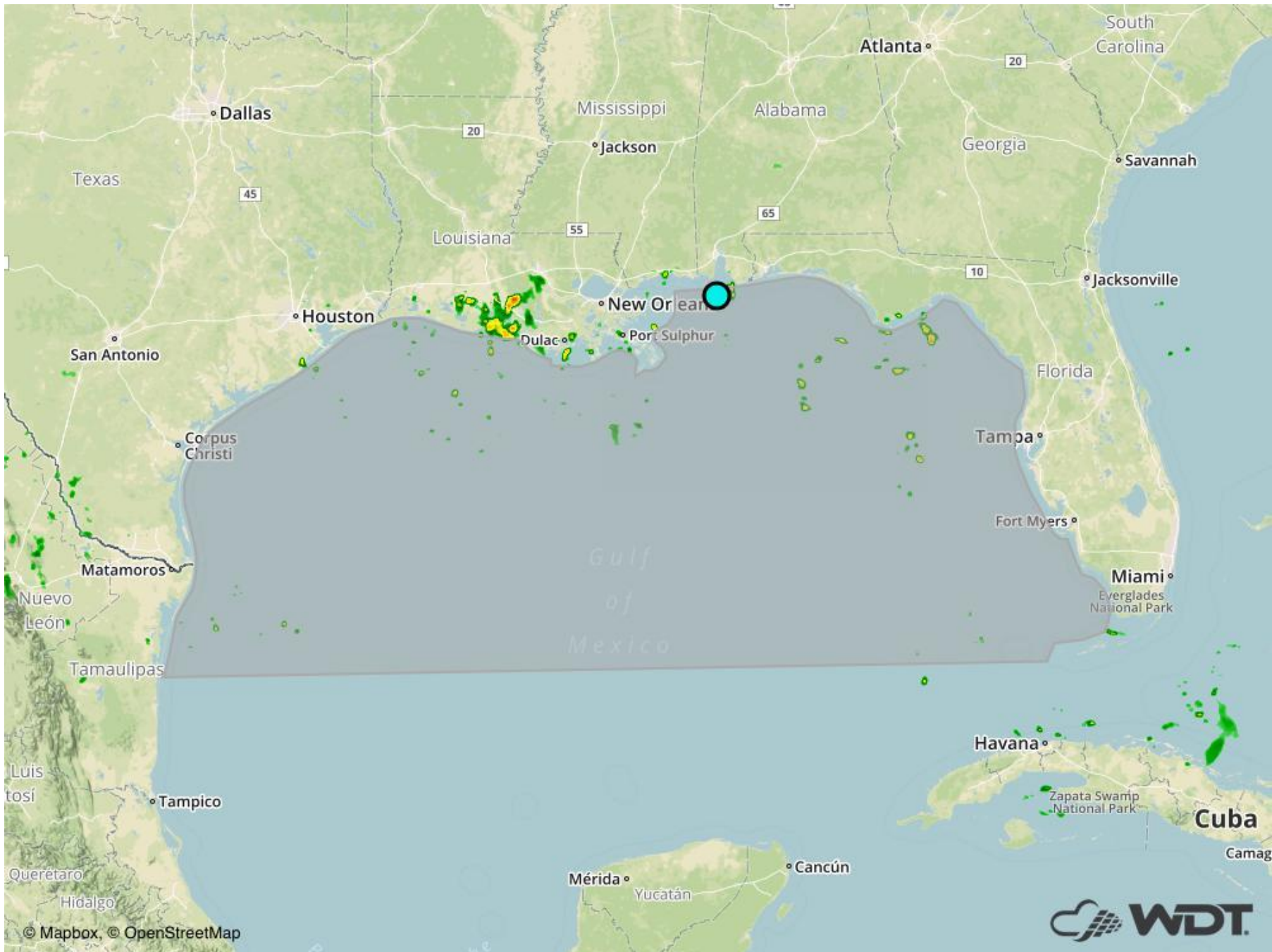
**A WDT Discussion has been issued for Port of Mobile Fairway Anchorage**

Good Day,



Port of Mobile Fairway Anchorage  
WDT Discussion

A WeatherOps Forecaster has issued a WDT Discussion for WGMA's Port of Mobile Fairway Anchorage at Thursday, July 13, 2017 5:00 am CDT. [Monitor in real-time on WeatherOps Map for WGMA.](#)





[forecaster@weatherops.com](mailto:forecaster@weatherops.com)

© Weather Decision Technologies, Inc.

**Gulf of Mexico Weather Synopsis - July 13, 2017**

Winds this morning over the Gulf are generally southeasterly in western and central regions at moderate speeds, and easterly at gentle speeds in the east. Models are showing a weak easterly wave moving across the Gulf over the next few days. Its chief effect will be to increase precipitation chances as it slowly moves westward. The wave should move into the eastern Gulf today, and make the central Gulf by Friday, finally entering western regions by early in the weekend. It should be weakening as it moves west, and should dissipate as it moves ashore over eastern Texas early next week. Wind directions west of the wave will gradually turn to northeasterly at gentle to moderate speeds, then will go back to east to southeast again at gentle to moderate speeds as the wave passes. Winds should be back to their normal patterns by early next week, with south to southeasterly winds in the west at moderate speeds, and east to southeast winds at gentle speeds in the east. Seas will be slight through the period.

ECMWF surface winds, sea-level pressure, and 6-hour precipitation valid 1200 UTC July 13:

<http://metgen->

[images.aws.wdtinc.com.s3.amazonaws.com/images/ecmwf\\_hires/gulf\\_of\\_mexico/2017071300/total\\_precipitation/2017071300\\_f12\\_gulf\\_of\\_mexico\\_total\\_precipitation.gif](http://images.aws.wdtinc.com.s3.amazonaws.com/images/ecmwf_hires/gulf_of_mexico/2017071300/total_precipitation/2017071300_f12_gulf_of_mexico_total_precipitation.gif)

ECMWF surface winds, sea-level pressure, and 6-hour precipitation valid 1200 UTC July 14:

<http://metgen->

[images.aws.wdtinc.com.s3.amazonaws.com/images/ecmwf\\_hires/gulf\\_of\\_mexico/2017071300/total\\_precipitation/2017071300\\_f36\\_gulf\\_of\\_mexico\\_total\\_precipitation.gif](http://images.aws.wdtinc.com.s3.amazonaws.com/images/ecmwf_hires/gulf_of_mexico/2017071300/total_precipitation/2017071300_f36_gulf_of_mexico_total_precipitation.gif)

ECMWF surface winds, sea-level pressure, and 6-hour precipitation valid 1200 UTC July 15:

<http://metgen->

[images.aws.wdtinc.com.s3.amazonaws.com/images/ecmwf\\_hires/gulf\\_of\\_mexico/2017071300/total\\_precipitation/2017071300\\_f60\\_gulf\\_of\\_mexico\\_total\\_precipitation.gif](http://images.aws.wdtinc.com.s3.amazonaws.com/images/ecmwf_hires/gulf_of_mexico/2017071300/total_precipitation/2017071300_f60_gulf_of_mexico_total_precipitation.gif)

Alertable Location ID: 286250

Event ID: 225788

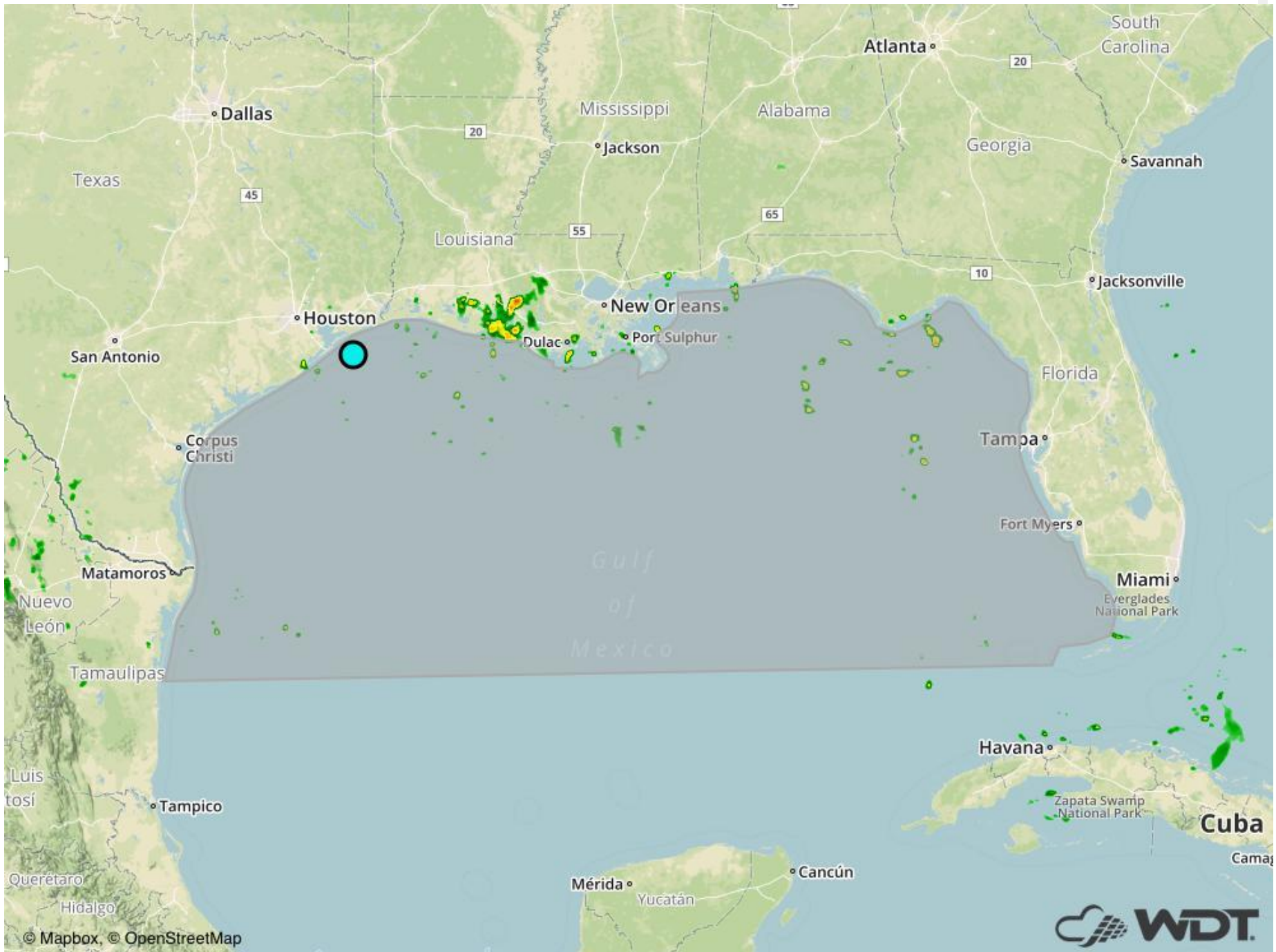
**A WDT Discussion has been issued for Galveston Anchorage**

Good Day,



Galveston Anchorage  
WDT Discussion

A WeatherOps Forecaster has issued a WDT Discussion for WGMA's Galveston Anchorage at Thursday, July 13, 2017 5:00 am CDT. [Monitor in real-time on WeatherOps Map for WGMA.](#)





[forecaster@weatherops.com](mailto:forecaster@weatherops.com)

© Weather Decision Technologies, Inc.

**Gulf of Mexico Weather Synopsis - July 13, 2017**

Winds this morning over the Gulf are generally southeasterly in western and central regions at moderate speeds, and easterly at gentle speeds in the east. Models are showing a weak easterly wave moving across the Gulf over the next few days. Its chief effect will be to increase precipitation chances as it slowly moves westward. The wave should move into the eastern Gulf today, and make the central Gulf by Friday, finally entering western regions by early in the weekend. It should be weakening as it moves west, and should dissipate as it moves ashore over eastern Texas early next week. Wind directions west of the wave will gradually turn to northeasterly at gentle to moderate speeds, then will go back to east to southeast again at gentle to moderate speeds as the wave passes. Winds should be back to their normal patterns by early next week, with south to southeasterly winds in the west at moderate speeds, and east to southeast winds at gentle speeds in the east. Seas will be slight through the period.

ECMWF surface winds, sea-level pressure, and 6-hour precipitation valid 1200 UTC July 13:

<http://metgen->

[images.aws.wdtinc.com.s3.amazonaws.com/images/ecmwf\\_hires/gulf\\_of\\_mexico/2017071300/total\\_precipitation/2017071300\\_f12\\_gulf\\_of\\_mexico\\_total\\_precipitation.gif](http://images.aws.wdtinc.com.s3.amazonaws.com/images/ecmwf_hires/gulf_of_mexico/2017071300/total_precipitation/2017071300_f12_gulf_of_mexico_total_precipitation.gif)

ECMWF surface winds, sea-level pressure, and 6-hour precipitation valid 1200 UTC July 14:

<http://metgen->

[images.aws.wdtinc.com.s3.amazonaws.com/images/ecmwf\\_hires/gulf\\_of\\_mexico/2017071300/total\\_precipitation/2017071300\\_f36\\_gulf\\_of\\_mexico\\_total\\_precipitation.gif](http://images.aws.wdtinc.com.s3.amazonaws.com/images/ecmwf_hires/gulf_of_mexico/2017071300/total_precipitation/2017071300_f36_gulf_of_mexico_total_precipitation.gif)

ECMWF surface winds, sea-level pressure, and 6-hour precipitation valid 1200 UTC July 15:

<http://metgen->

[images.aws.wdtinc.com.s3.amazonaws.com/images/ecmwf\\_hires/gulf\\_of\\_mexico/2017071300/total\\_precipitation/2017071300\\_f60\\_gulf\\_of\\_mexico\\_total\\_precipitation.gif](http://images.aws.wdtinc.com.s3.amazonaws.com/images/ecmwf_hires/gulf_of_mexico/2017071300/total_precipitation/2017071300_f60_gulf_of_mexico_total_precipitation.gif)

Alertable Location ID: 311017

Event ID: 225788

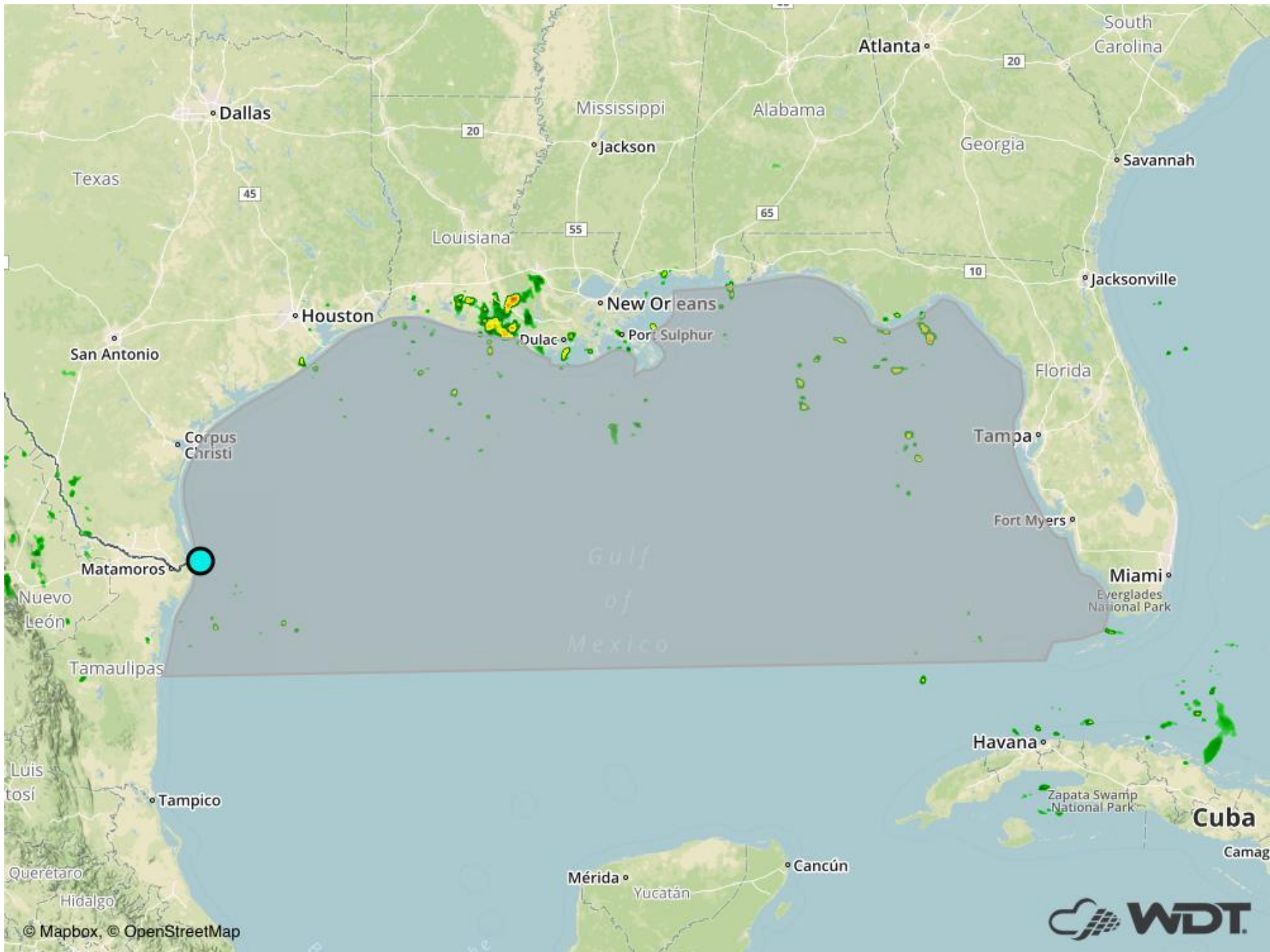
**A WDT Discussion has been issued for Port of Brownsville Fairway Anchorage**

Good Day,



Port of Brownsville Fairway Anchorage  
WDT Discussion

A WeatherOps Forecaster has issued a WDT Discussion for WGMA's Port of Brownsville Fairway Anchorage at Thursday, July 13, 2017 5:00 am CDT. [Monitor in real-time on WeatherOps Map for WGMA.](#)



[forecaster@weatherops.com](mailto:forecaster@weatherops.com)

© Weather Decision Technologies, Inc.

**Gulf of Mexico Weather Synopsis - July 13, 2017**

Winds this morning over the Gulf are generally southeasterly in western and central regions at moderate speeds, and easterly at gentle speeds in the east. Models are showing a weak easterly wave moving across the Gulf over the next few days. Its chief effect will be to increase precipitation chances as it slowly moves westward. The wave should move into the eastern Gulf today, and make the central Gulf by Friday, finally entering western regions by early in the weekend. It should be weakening as it moves west, and should dissipate as it moves ashore over eastern Texas early next week. Wind directions west of the wave will gradually turn to northeasterly at gentle to moderate speeds, then will go back to east to southeast again at gentle to moderate speeds as the wave passes. Winds should be back to their normal patterns by early next week, with south to southeasterly winds in the west at moderate speeds, and east to southeast winds at gentle speeds in the east. Seas will be slight through the period.

ECMWF surface winds, sea-level pressure, and 6-hour precipitation valid 1200 UTC July 13:

<http://metgen->

[images.aws.wdtinc.com.s3.amazonaws.com/images/ecmwf\\_hires/gulf\\_of\\_mexico/2017071300/total\\_precipitation/2017071300\\_f12\\_gulf\\_of\\_mexico\\_total\\_precipitation.gif](http://images.aws.wdtinc.com.s3.amazonaws.com/images/ecmwf_hires/gulf_of_mexico/2017071300/total_precipitation/2017071300_f12_gulf_of_mexico_total_precipitation.gif)

ECMWF surface winds, sea-level pressure, and 6-hour precipitation valid 1200 UTC July 14:

<http://metgen->

[images.aws.wdtinc.com.s3.amazonaws.com/images/ecmwf\\_hires/gulf\\_of\\_mexico/2017071300/total\\_precipitation/2017071300\\_f36\\_gulf\\_of\\_mexico\\_total\\_precipitation.gif](http://images.aws.wdtinc.com.s3.amazonaws.com/images/ecmwf_hires/gulf_of_mexico/2017071300/total_precipitation/2017071300_f36_gulf_of_mexico_total_precipitation.gif)

ECMWF surface winds, sea-level pressure, and 6-hour precipitation valid 1200 UTC July 15:

<http://metgen->

[images.aws.wdtinc.com.s3.amazonaws.com/images/ecmwf\\_hires/gulf\\_of\\_mexico/2017071300/total\\_precipitation/2017071300\\_f60\\_gulf\\_of\\_mexico\\_total\\_precipitation.gif](http://images.aws.wdtinc.com.s3.amazonaws.com/images/ecmwf_hires/gulf_of_mexico/2017071300/total_precipitation/2017071300_f60_gulf_of_mexico_total_precipitation.gif)

Alertable Location ID: 285491

Event ID: 225788

**A WDT Discussion has been issued for Port of Point Comfort Fairway Anchorage**

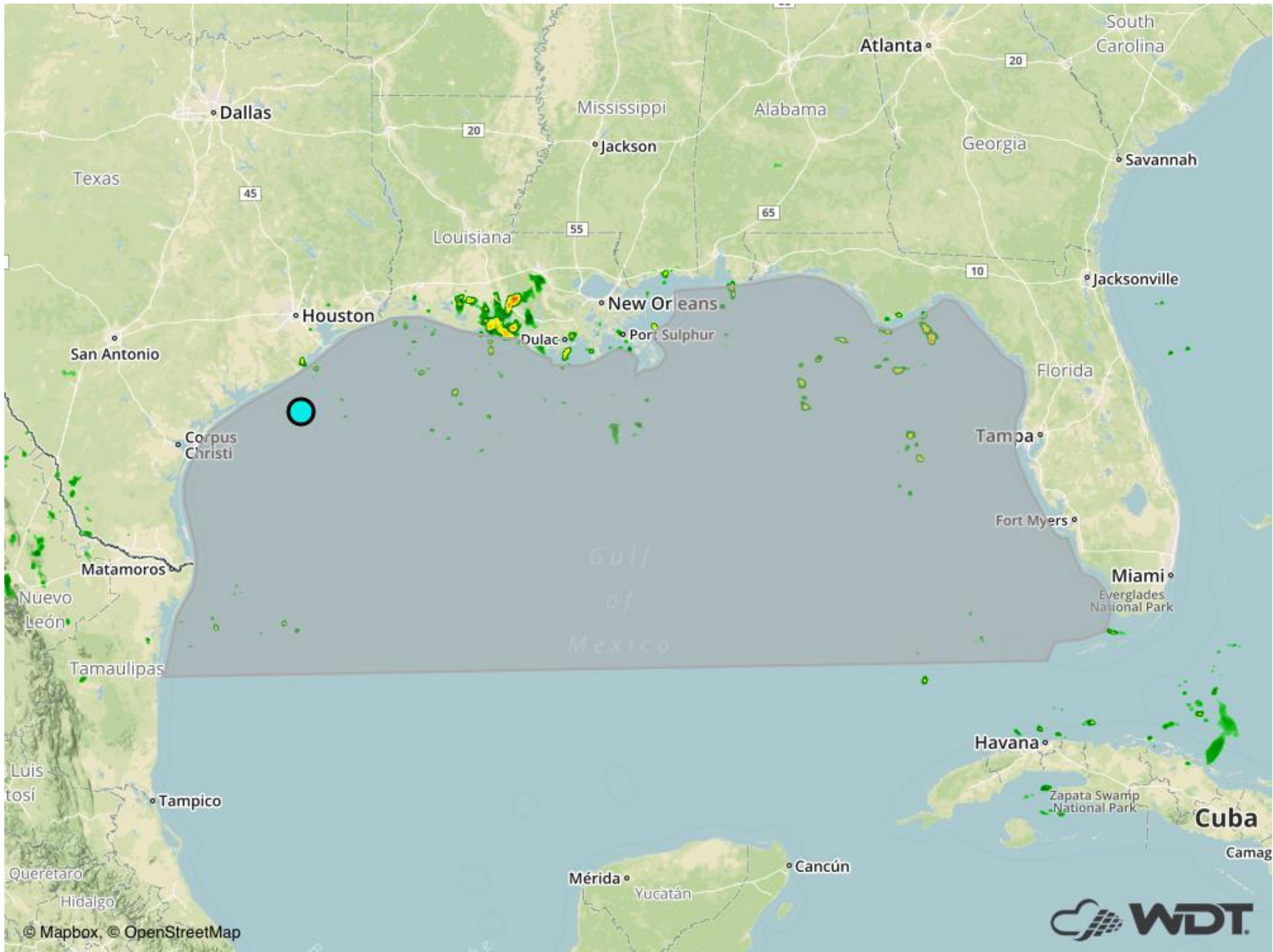
Good Day,



Port of Point Comfort Fairway Anchorage  
WDT Discussion

A WeatherOps Forecaster has issued a WDT Discussion for WGMA's Port of Point Comfort Fairway Anchorage at Thursday, July 13, 2017 5:00 am CDT. [Monitor in real-time on WeatherOps Map for WGMA.](#)





[forecaster@weatherops.com](mailto:forecaster@weatherops.com)

© Weather Decision Technologies, Inc.

**Gulf of Mexico Weather Synopsis - July 13, 2017**

Winds this morning over the Gulf are generally southeasterly in western and central regions at moderate speeds, and easterly at gentle speeds in the east. Models are showing a weak easterly wave moving across the Gulf over the next few days. Its chief effect will be to increase precipitation chances as it slowly moves westward. The wave should move into the eastern Gulf today, and make the central Gulf by Friday, finally entering western regions by early in the weekend. It should be weakening as it moves west, and should dissipate as it moves ashore over eastern Texas early next week. Wind directions west of the wave will gradually turn to northeasterly at gentle to moderate speeds, then will go back to east to southeast again at gentle to moderate speeds as the wave passes. Winds should be back to their normal patterns by early next week, with south to southeasterly winds in the west at moderate speeds, and east to southeast winds at gentle speeds in the east. Seas will be slight through the period.

ECMWF surface winds, sea-level pressure, and 6-hour precipitation valid 1200 UTC July 13:

<http://metgen->

[images.aws.wdtinc.com.s3.amazonaws.com/images/ecmwf\\_hires/gulf\\_of\\_mexico/2017071300/total\\_precipitation/2017071300\\_f12\\_gulf\\_of\\_mexico\\_total\\_precipitation.gif](http://images.aws.wdtinc.com.s3.amazonaws.com/images/ecmwf_hires/gulf_of_mexico/2017071300/total_precipitation/2017071300_f12_gulf_of_mexico_total_precipitation.gif)

ECMWF surface winds, sea-level pressure, and 6-hour precipitation valid 1200 UTC July 14:

<http://metgen->

[images.aws.wdtinc.com.s3.amazonaws.com/images/ecmwf\\_hires/gulf\\_of\\_mexico/2017071300/total\\_precipitation/2017071300\\_f36\\_gulf\\_of\\_mexico\\_total\\_precipitation.gif](http://images.aws.wdtinc.com.s3.amazonaws.com/images/ecmwf_hires/gulf_of_mexico/2017071300/total_precipitation/2017071300_f36_gulf_of_mexico_total_precipitation.gif)

ECMWF surface winds, sea-level pressure, and 6-hour precipitation valid 1200 UTC July 15:

<http://metgen->

[images.aws.wdtinc.com.s3.amazonaws.com/images/ecmwf\\_hires/gulf\\_of\\_mexico/2017071300/total\\_precipitation/2017071300\\_f60\\_gulf\\_of\\_mexico\\_total\\_precipitation.gif](http://images.aws.wdtinc.com.s3.amazonaws.com/images/ecmwf_hires/gulf_of_mexico/2017071300/total_precipitation/2017071300_f60_gulf_of_mexico_total_precipitation.gif)

Alertable Location ID: 286441

Event ID: 225788

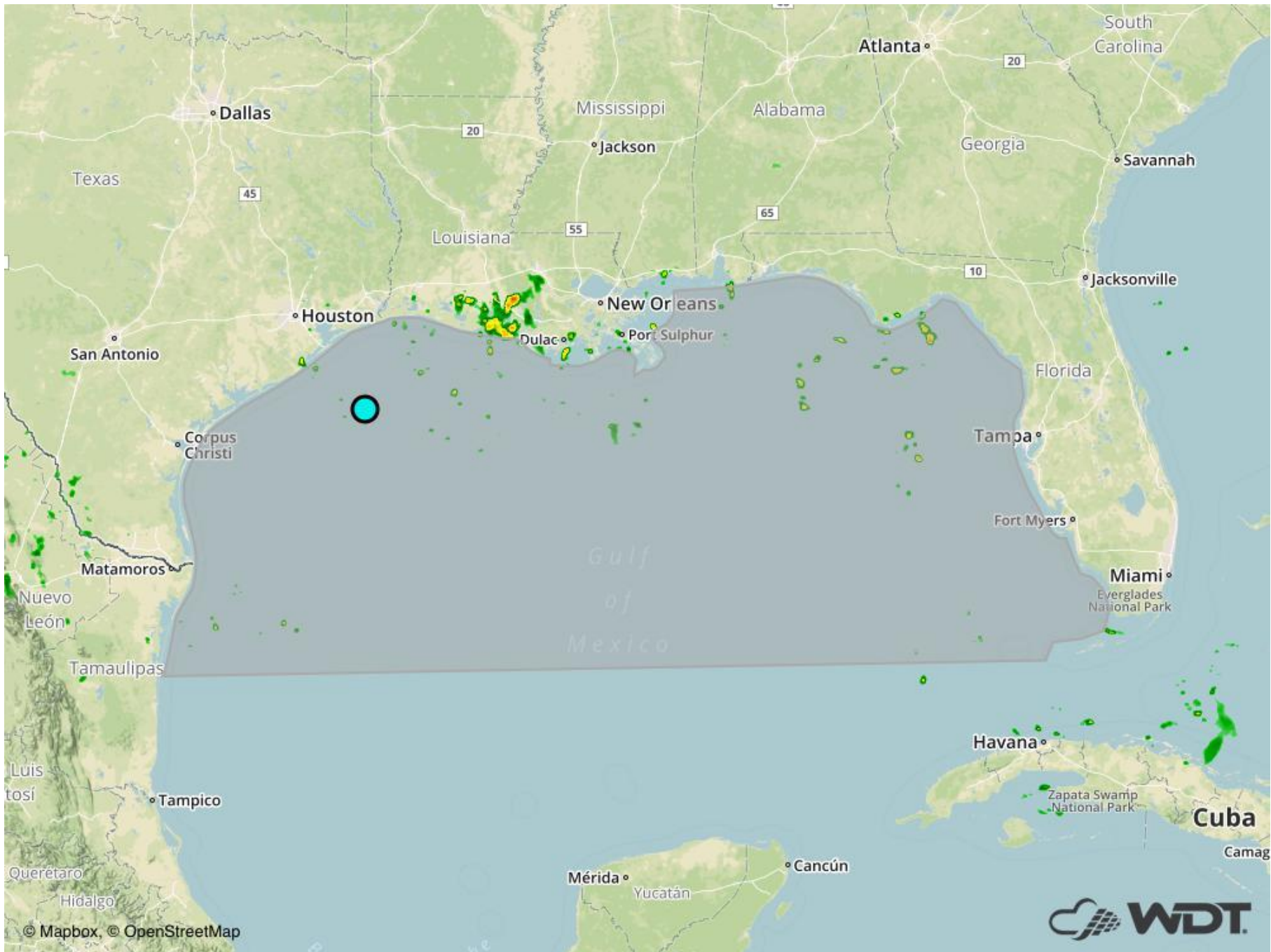
**A WDT Discussion has been issued for Offshore Galveston Lightering Area**

Good Day,



Offshore Galveston Lightering Area  
WDT Discussion

A WeatherOps Forecaster has issued a WDT Discussion for WGMA's Offshore Galveston Lightering Area at Thursday, July 13, 2017 5:00 am CDT. [Monitor in real-time on WeatherOps Map for WGMA.](#)



[forecaster@weatherops.com](mailto:forecaster@weatherops.com)

© Weather Decision Technologies, Inc.

**Gulf of Mexico Weather Synopsis - July 13, 2017**

Winds this morning over the Gulf are generally southeasterly in western and central regions at moderate speeds, and easterly at gentle speeds in the east. Models are showing a weak easterly wave moving across the Gulf over the next few days. Its chief effect will be to increase precipitation chances as it slowly moves westward. The wave should move into the eastern Gulf today, and make the central Gulf by Friday, finally entering western regions by early in the weekend. It should be weakening as it moves west, and should dissipate as it moves ashore over eastern Texas early next week. Wind directions west of the wave will gradually turn to northeasterly at gentle to moderate speeds, then will go back to east to southeast again at gentle to moderate speeds as the wave passes. Winds should be back to their normal patterns by early next week, with south to southeasterly winds in the west at moderate speeds, and east to southeast winds at gentle speeds in the east. Seas will be slight through the period.

ECMWF surface winds, sea-level pressure, and 6-hour precipitation valid 1200 UTC July 13:

<http://metgen->

[images.aws.wdtinc.com.s3.amazonaws.com/images/ecmwf\\_hires/gulf\\_of\\_mexico/2017071300/total\\_precipitation/2017071300\\_f12\\_gulf\\_of\\_mexico\\_total\\_precipitation.gif](http://images.aws.wdtinc.com.s3.amazonaws.com/images/ecmwf_hires/gulf_of_mexico/2017071300/total_precipitation/2017071300_f12_gulf_of_mexico_total_precipitation.gif)

ECMWF surface winds, sea-level pressure, and 6-hour precipitation valid 1200 UTC July 14:

<http://metgen->

[images.aws.wdtinc.com.s3.amazonaws.com/images/ecmwf\\_hires/gulf\\_of\\_mexico/2017071300/total\\_precipitation/2017071300\\_f36\\_gulf\\_of\\_mexico\\_total\\_precipitation.gif](http://images.aws.wdtinc.com.s3.amazonaws.com/images/ecmwf_hires/gulf_of_mexico/2017071300/total_precipitation/2017071300_f36_gulf_of_mexico_total_precipitation.gif)

ECMWF surface winds, sea-level pressure, and 6-hour precipitation valid 1200 UTC July 15:

<http://metgen->

[images.aws.wdtinc.com.s3.amazonaws.com/images/ecmwf\\_hires/gulf\\_of\\_mexico/2017071300/total\\_precipitation/2017071300\\_f60\\_gulf\\_of\\_mexico\\_total\\_precipitation.gif](http://images.aws.wdtinc.com.s3.amazonaws.com/images/ecmwf_hires/gulf_of_mexico/2017071300/total_precipitation/2017071300_f60_gulf_of_mexico_total_precipitation.gif)

Alertable Location ID: 310959

Event ID: 225788

**A WDT Discussion has been issued for Port of Corpus Christi Fairway Anchorage**

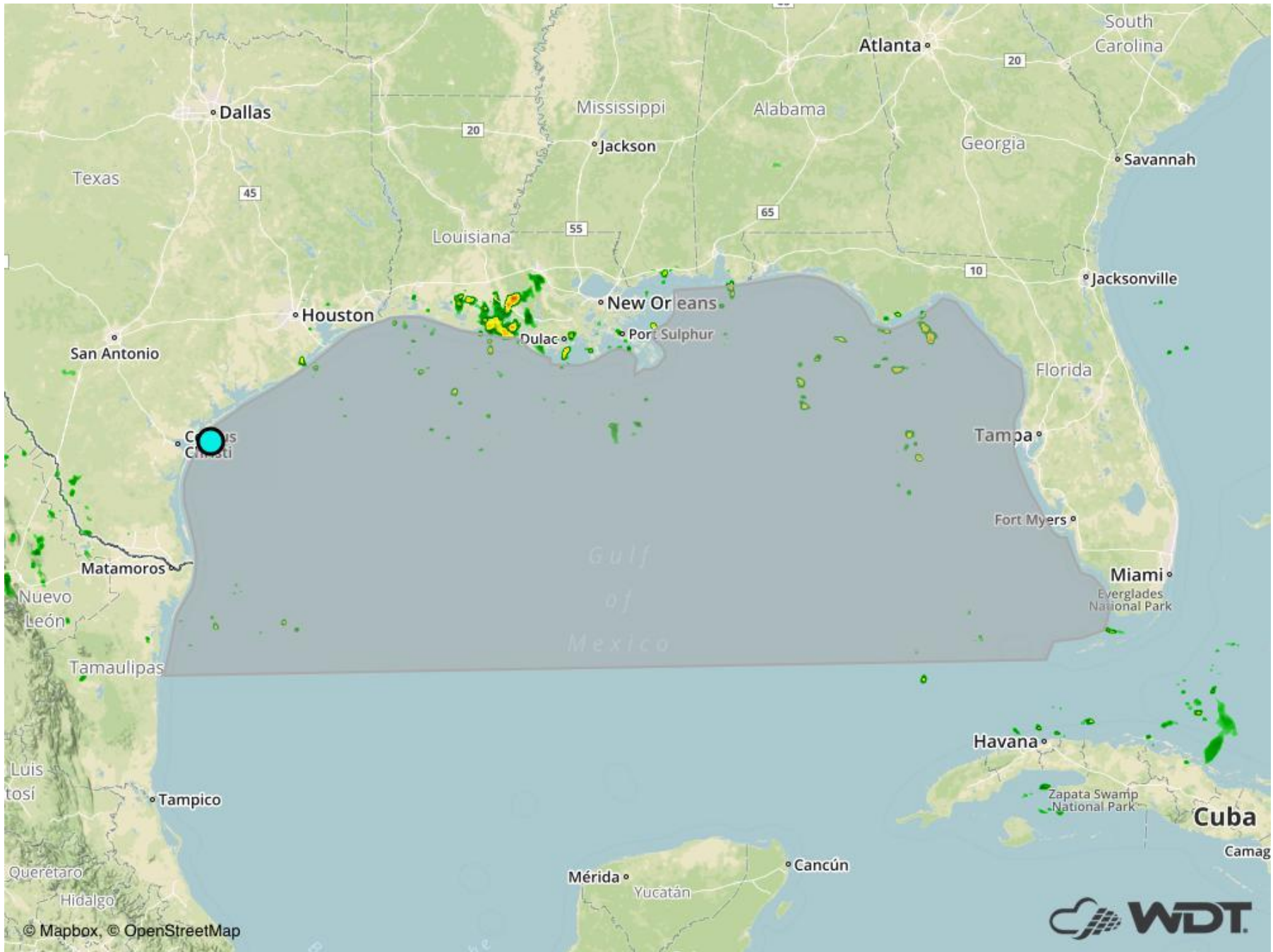
Good Day,





Port of Corpus Christi Fairway Anchorage  
WDT Discussion

A WeatherOps Forecaster has issued a WDT Discussion for WGMA's Port of Corpus Christi Fairway Anchorage at Thursday, July 13, 2017 5:00 am CDT. [Monitor in real-time on WeatherOps Map for WGMA.](#)



[forecaster@weatherops.com](mailto:forecaster@weatherops.com)

© Weather Decision Technologies, Inc.

**Gulf of Mexico Weather Synopsis - July 13, 2017**

Winds this morning over the Gulf are generally southeasterly in western and central regions at moderate speeds, and easterly at gentle speeds in the east. Models are showing a weak easterly wave moving across the Gulf over the next few days. Its chief effect will be to increase precipitation chances as it slowly moves westward. The wave should move into the eastern Gulf today, and make the central Gulf by Friday, finally entering western regions by early in the weekend. It should be weakening as it moves west, and should dissipate as it moves ashore over eastern Texas early next week. Wind directions west of the wave will gradually turn to northeasterly at gentle to moderate speeds, then will go back to east to southeast again at gentle to moderate speeds as the wave passes. Winds should be back to their normal patterns by early next week, with south to southeasterly winds in the west at moderate speeds, and east to southeast winds at gentle speeds in the east. Seas will be slight through the period.

ECMWF surface winds, sea-level pressure, and 6-hour precipitation valid 1200 UTC July 13:

<http://metgen->

[images.aws.wdtinc.com.s3.amazonaws.com/images/ecmwf\\_hires/gulf\\_of\\_mexico/2017071300/total\\_precipitation/2017071300\\_f12\\_gulf\\_of\\_mexico\\_total\\_precipitation.gif](http://images.aws.wdtinc.com.s3.amazonaws.com/images/ecmwf_hires/gulf_of_mexico/2017071300/total_precipitation/2017071300_f12_gulf_of_mexico_total_precipitation.gif)

ECMWF surface winds, sea-level pressure, and 6-hour precipitation valid 1200 UTC July 14:

<http://metgen->

[images.aws.wdtinc.com.s3.amazonaws.com/images/ecmwf\\_hires/gulf\\_of\\_mexico/2017071300/total\\_precipitation/2017071300\\_f36\\_gulf\\_of\\_mexico\\_total\\_precipitation.gif](http://images.aws.wdtinc.com.s3.amazonaws.com/images/ecmwf_hires/gulf_of_mexico/2017071300/total_precipitation/2017071300_f36_gulf_of_mexico_total_precipitation.gif)

ECMWF surface winds, sea-level pressure, and 6-hour precipitation valid 1200 UTC July 15:

<http://metgen->

[images.aws.wdtinc.com.s3.amazonaws.com/images/ecmwf\\_hires/gulf\\_of\\_mexico/2017071300/total\\_precipitation/2017071300\\_f60\\_gulf\\_of\\_mexico\\_total\\_precipitation.gif](http://images.aws.wdtinc.com.s3.amazonaws.com/images/ecmwf_hires/gulf_of_mexico/2017071300/total_precipitation/2017071300_f60_gulf_of_mexico_total_precipitation.gif)

Alertable Location ID: 285680

Event ID: 225788

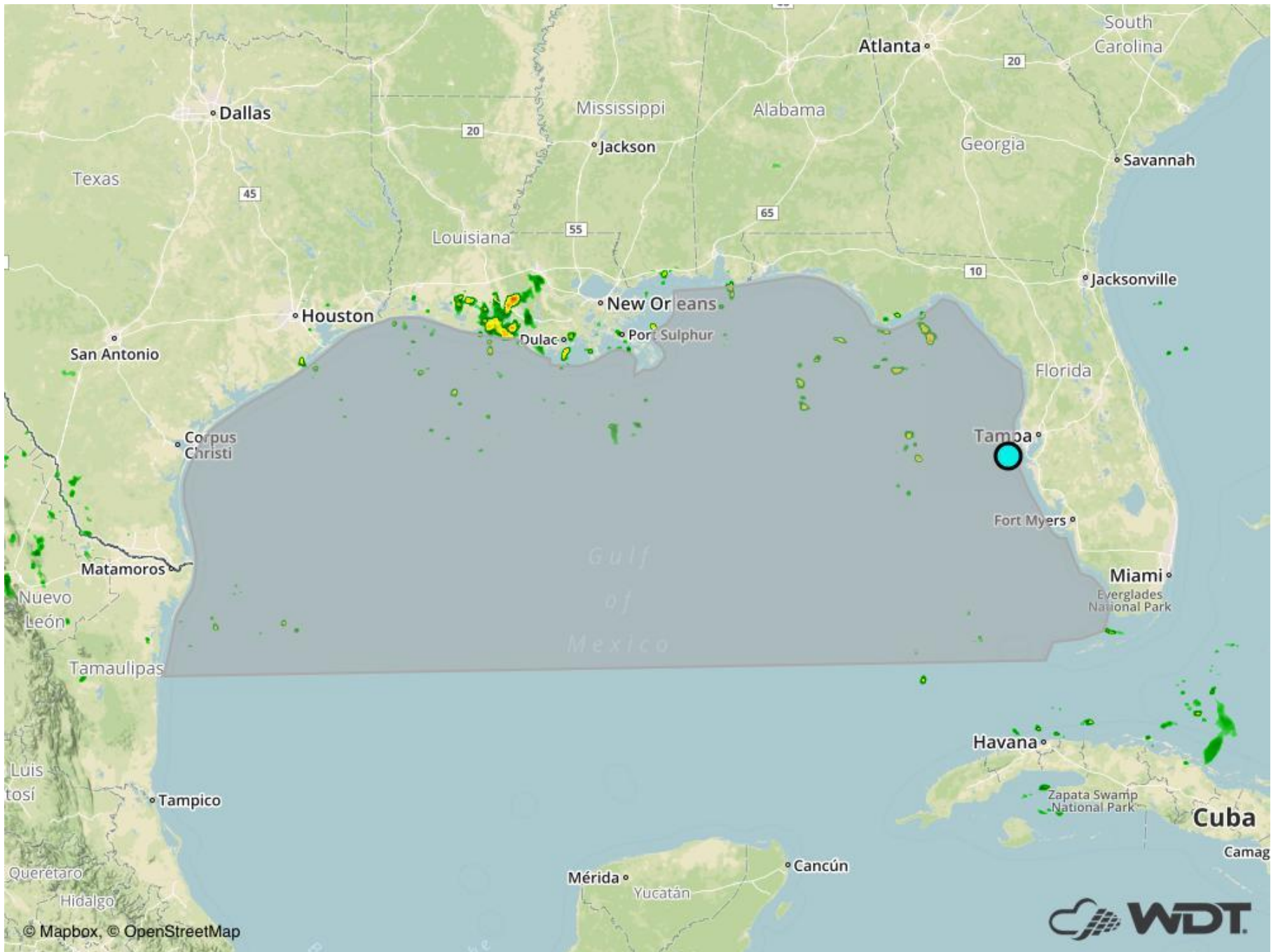
**A WDT Discussion has been issued for Port of Tampa Fairway Anchorages**

Good Day,



Port of Tampa Fairway Anchorages  
WDT Discussion

A WeatherOps Forecaster has issued a WDT Discussion for WGMA's Port of Tampa Fairway Anchorages at Thursday, July 13, 2017 6:00 am EDT. [Monitor in real-time on WeatherOps Map for WGMA.](#)





[forecaster@weatherops.com](mailto:forecaster@weatherops.com)

© Weather Decision Technologies, Inc.

**Gulf of Mexico Weather Synopsis - July 13, 2017**

Winds this morning over the Gulf are generally southeasterly in western and central regions at moderate speeds, and easterly at gentle speeds in the east. Models are showing a weak easterly wave moving across the Gulf over the next few days. Its chief effect will be to increase precipitation chances as it slowly moves westward. The wave should move into the eastern Gulf today, and make the central Gulf by Friday, finally entering western regions by early in the weekend. It should be weakening as it moves west, and should dissipate as it moves ashore over eastern Texas early next week. Wind directions west of the wave will gradually turn to northeasterly at gentle to moderate speeds, then will go back to east to southeast again at gentle to moderate speeds as the wave passes. Winds should be back to their normal patterns by early next week, with south to southeasterly winds in the west at moderate speeds, and east to southeast winds at gentle speeds in the east. Seas will be slight through the period.

ECMWF surface winds, sea-level pressure, and 6-hour precipitation valid 1200 UTC July 13:

<http://metgen->

[images.aws.wdtinc.com.s3.amazonaws.com/images/ecmwf\\_hires/gulf\\_of\\_mexico/2017071300/total\\_precipitation/2017071300\\_f12\\_gulf\\_of\\_mexico\\_total\\_precipitation.gif](http://images.aws.wdtinc.com.s3.amazonaws.com/images/ecmwf_hires/gulf_of_mexico/2017071300/total_precipitation/2017071300_f12_gulf_of_mexico_total_precipitation.gif)

ECMWF surface winds, sea-level pressure, and 6-hour precipitation valid 1200 UTC July 14:

<http://metgen->

[images.aws.wdtinc.com.s3.amazonaws.com/images/ecmwf\\_hires/gulf\\_of\\_mexico/2017071300/total\\_precipitation/2017071300\\_f36\\_gulf\\_of\\_mexico\\_total\\_precipitation.gif](http://images.aws.wdtinc.com.s3.amazonaws.com/images/ecmwf_hires/gulf_of_mexico/2017071300/total_precipitation/2017071300_f36_gulf_of_mexico_total_precipitation.gif)

ECMWF surface winds, sea-level pressure, and 6-hour precipitation valid 1200 UTC July 15:

<http://metgen->

[images.aws.wdtinc.com.s3.amazonaws.com/images/ecmwf\\_hires/gulf\\_of\\_mexico/2017071300/total\\_precipitation/2017071300\\_f60\\_gulf\\_of\\_mexico\\_total\\_precipitation.gif](http://images.aws.wdtinc.com.s3.amazonaws.com/images/ecmwf_hires/gulf_of_mexico/2017071300/total_precipitation/2017071300_f60_gulf_of_mexico_total_precipitation.gif)

Alertable Location ID: 286630

Event ID: 225788

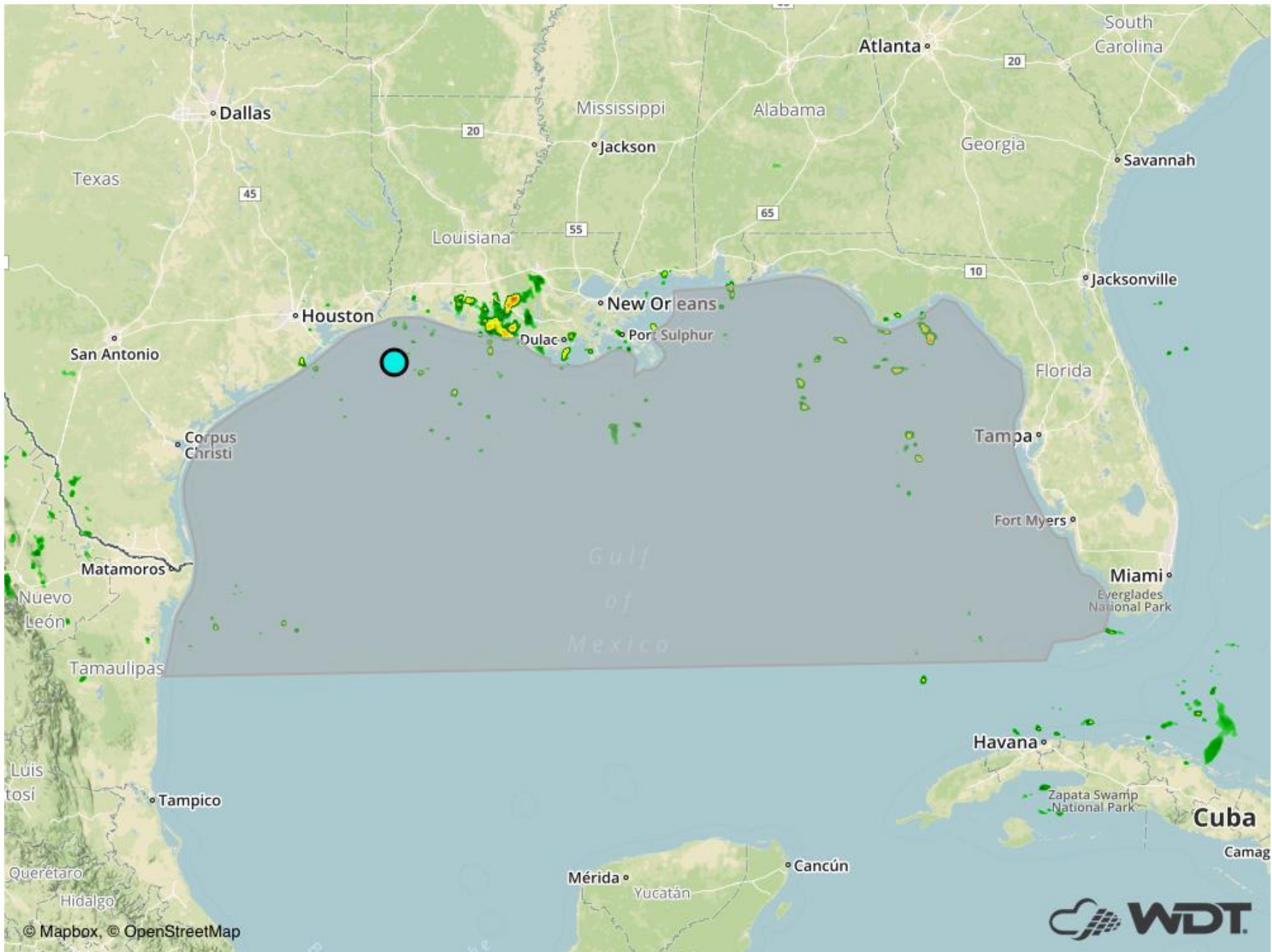
**A WDT Discussion has been issued for Port of Beaumont & Port Arthur Fairway Anchor**

Good Day,



Port of Beaumont & Port Arthur Fairway Anchor  
WDT Discussion

A WeatherOps Forecaster has issued a WDT Discussion for WGMA's Port of Beaumont & Port Arthur Fairway Anchor at Thursday, July 13, 2017 5:00 am CDT. [Monitor in real-time on WeatherOps Map for WGMA.](#)



[forecaster@weatherops.com](mailto:forecaster@weatherops.com)

© Weather Decision Technologies, Inc.

**Gulf of Mexico Weather Synopsis - July 13, 2017**

Winds this morning over the Gulf are generally southeasterly in western and central regions at moderate speeds, and easterly at gentle speeds in the east. Models are showing a weak easterly wave moving across the Gulf over the next few days. Its chief effect will be to increase precipitation chances as it slowly moves westward. The wave should move into the eastern Gulf today, and make the central Gulf by Friday, finally entering western regions by early in the weekend. It should be weakening as it moves west, and should dissipate as it moves ashore over eastern Texas early next week. Wind directions west of the wave will gradually turn to northeasterly at gentle to moderate speeds, then will go back to east to southeast again at gentle to moderate speeds as the wave passes. Winds should be back to their normal patterns by early next week, with south to southeasterly winds in the west at moderate speeds, and east to southeast winds at gentle speeds in the east. Seas will be slight through the period.

ECMWF surface winds, sea-level pressure, and 6-hour precipitation valid 1200 UTC July 13:

<http://metgen->

[images.aws.wdtinc.com.s3.amazonaws.com/images/ecmwf\\_hires/gulf\\_of\\_mexico/2017071300/total\\_precipitation/2017071300\\_f12\\_gulf\\_of\\_mexico\\_total\\_precipitation.gif](http://images.aws.wdtinc.com.s3.amazonaws.com/images/ecmwf_hires/gulf_of_mexico/2017071300/total_precipitation/2017071300_f12_gulf_of_mexico_total_precipitation.gif)

ECMWF surface winds, sea-level pressure, and 6-hour precipitation valid 1200 UTC July 14:

<http://metgen->

[images.aws.wdtinc.com.s3.amazonaws.com/images/ecmwf\\_hires/gulf\\_of\\_mexico/2017071300/total\\_precipitation/2017071300\\_f36\\_gulf\\_of\\_mexico\\_total\\_precipitation.gif](http://images.aws.wdtinc.com.s3.amazonaws.com/images/ecmwf_hires/gulf_of_mexico/2017071300/total_precipitation/2017071300_f36_gulf_of_mexico_total_precipitation.gif)

ECMWF surface winds, sea-level pressure, and 6-hour precipitation valid 1200 UTC July 15:

<http://metgen->

[images.aws.wdtinc.com.s3.amazonaws.com/images/ecmwf\\_hires/gulf\\_of\\_mexico/2017071300/total\\_precipitation/2017071300\\_f60\\_gulf\\_of\\_mexico\\_total\\_precipitation.gif](http://images.aws.wdtinc.com.s3.amazonaws.com/images/ecmwf_hires/gulf_of_mexico/2017071300/total_precipitation/2017071300_f60_gulf_of_mexico_total_precipitation.gif)

Alertable Location ID: 285300

Event ID: 225788

**A WDT Discussion has been issued for Port of Lake Charles Fairway Anchorage**

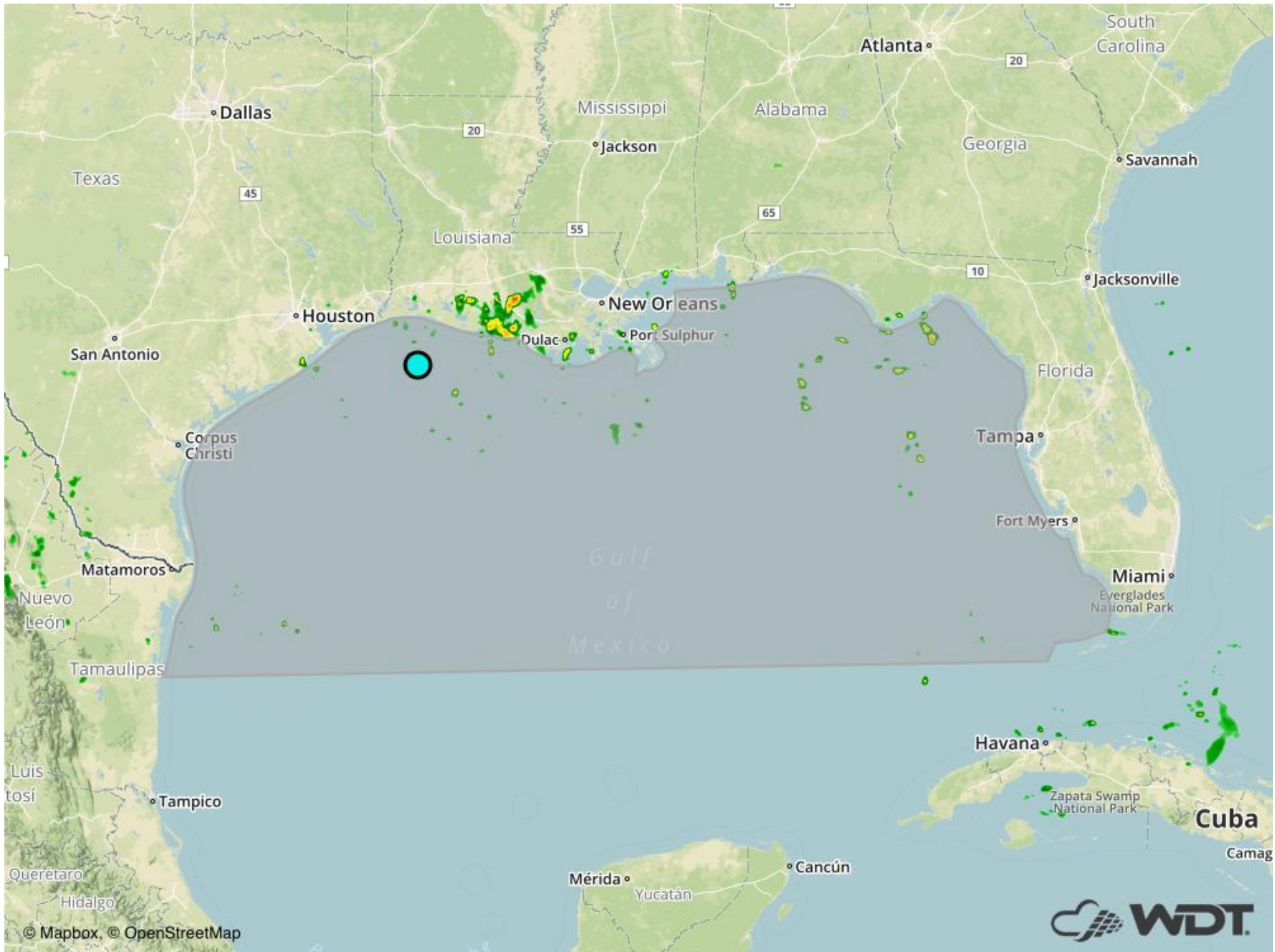
Good Day,



Port of Lake Charles Fairway Anchorage  
WDT Discussion

A WeatherOps Forecaster has issued a WDT Discussion for WGMA's Port of Lake Charles Fairway Anchorage at Thursday, July 13, 2017 5:00 am CDT. [Monitor in real-time on WeatherOps Map for WGMA.](#)





[forecaster@weatherops.com](mailto:forecaster@weatherops.com)

© Weather Decision Technologies, Inc.

**Gulf of Mexico Weather Synopsis - July 13, 2017**

Winds this morning over the Gulf are generally southeasterly in western and central regions at moderate speeds, and easterly at gentle speeds in the east. Models are showing a weak easterly wave moving across the Gulf over the next few days. Its chief effect will be to increase precipitation chances as it slowly moves westward. The wave should move into the eastern Gulf today, and make the central Gulf by Friday, finally entering western regions by early in the weekend. It should be weakening as it moves west, and should dissipate as it moves ashore over eastern Texas early next week. Wind directions west of the wave will gradually turn to northeasterly at gentle to moderate speeds, then will go back to east to southeast again at gentle to moderate speeds as the wave passes. Winds should be back to their normal patterns by early next week, with south to southeasterly winds in the west at moderate speeds, and east to southeast winds at gentle speeds in the east. Seas will be slight through the period.

ECMWF surface winds, sea-level pressure, and 6-hour precipitation valid 1200 UTC July 13:

<http://metgen->

[images.aws.wdtinc.com.s3.amazonaws.com/images/ecmwf\\_hires/gulf\\_of\\_mexico/2017071300/total\\_precipitation/2017071300\\_f12\\_gulf\\_of\\_mexico\\_total\\_precipitation.gif](http://images.aws.wdtinc.com.s3.amazonaws.com/images/ecmwf_hires/gulf_of_mexico/2017071300/total_precipitation/2017071300_f12_gulf_of_mexico_total_precipitation.gif)

ECMWF surface winds, sea-level pressure, and 6-hour precipitation valid 1200 UTC July 14:

<http://metgen->

[images.aws.wdtinc.com.s3.amazonaws.com/images/ecmwf\\_hires/gulf\\_of\\_mexico/2017071300/total\\_precipitation/2017071300\\_f36\\_gulf\\_of\\_mexico\\_total\\_precipitation.gif](http://images.aws.wdtinc.com.s3.amazonaws.com/images/ecmwf_hires/gulf_of_mexico/2017071300/total_precipitation/2017071300_f36_gulf_of_mexico_total_precipitation.gif)

ECMWF surface winds, sea-level pressure, and 6-hour precipitation valid 1200 UTC July 15:

<http://metgen->

[images.aws.wdtinc.com.s3.amazonaws.com/images/ecmwf\\_hires/gulf\\_of\\_mexico/2017071300/total\\_precipitation/2017071300\\_f60\\_gulf\\_of\\_mexico\\_total\\_precipitation.gif](http://images.aws.wdtinc.com.s3.amazonaws.com/images/ecmwf_hires/gulf_of_mexico/2017071300/total_precipitation/2017071300_f60_gulf_of_mexico_total_precipitation.gif)

Alertable Location ID: 286061

Event ID: 225788