

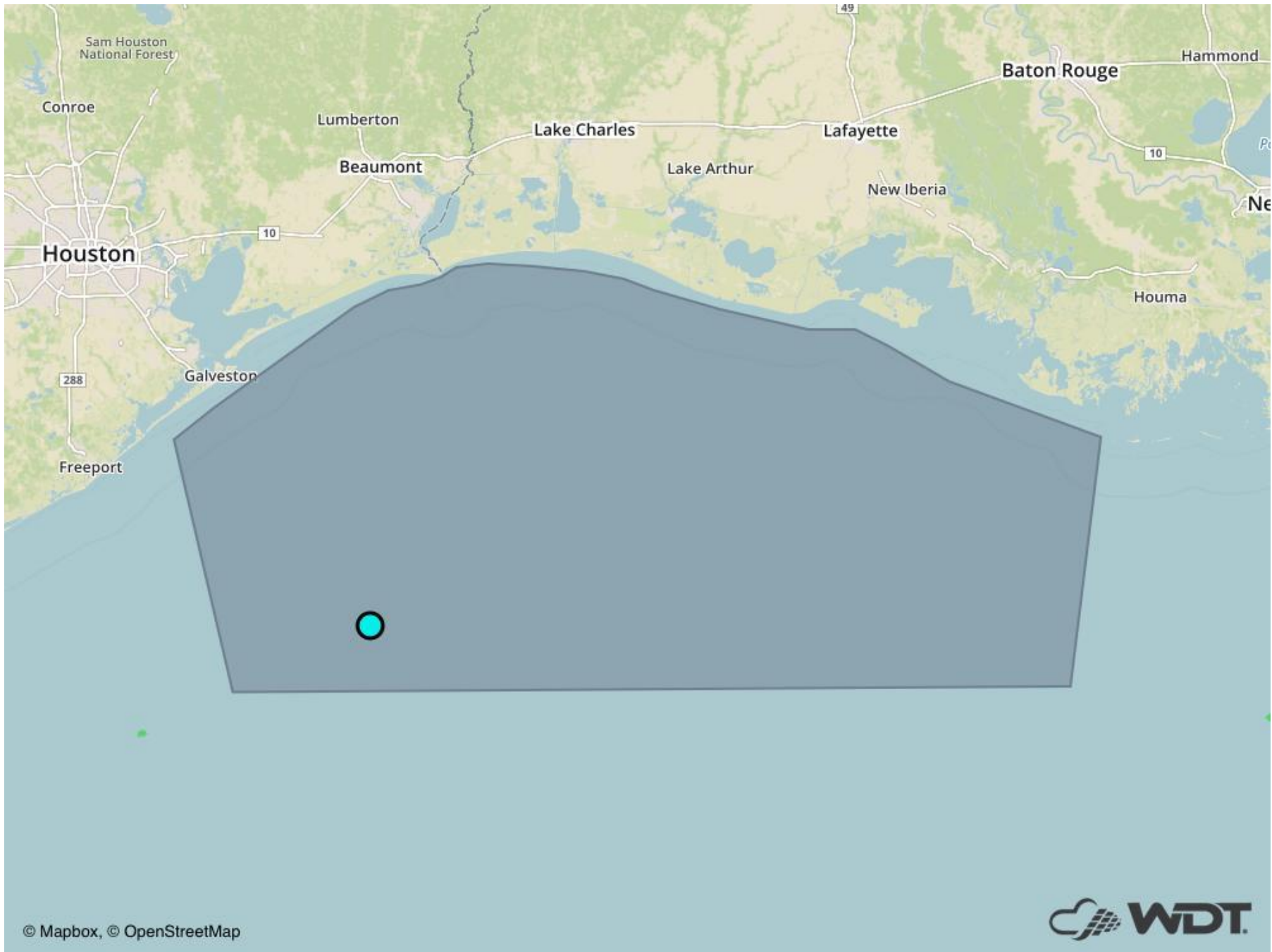
A WDT Marine Fog Advisory has been issued for Offshore Galveston Lightering Area

Good Day,



Offshore Galveston Lightering Area  
WDT Marine Fog Advisory, expires at Saturday, February 10, 2018 8:00 am CST

A WeatherOps Forecaster has issued a WDT Marine Fog Advisory for WGMA's Offshore Galveston Lightering Area at Friday, February 9, 2018 7:40 am CST through Saturday, February 10, 2018 8:00 am CST. [Monitor in real-time on WeatherOps Map for WGMA.](#)



[forecaster@weatherops.com](mailto:forecaster@weatherops.com)

© Weather Decision Technologies, Inc.

**Sea fog leading to reduced visibility possible**

Threat Timing - 6:00 PM Friday through 8:00 AM Saturday

Primary Impacts:

Visibility - Less than 2.0 nm

With a gentle to moderate breeze in the region and temperatures falling to near the dewpoint over the waters, sea fog will have the potential to develop Friday evening into Saturday morning. Visibility of less than 2.0 nm will be possible.

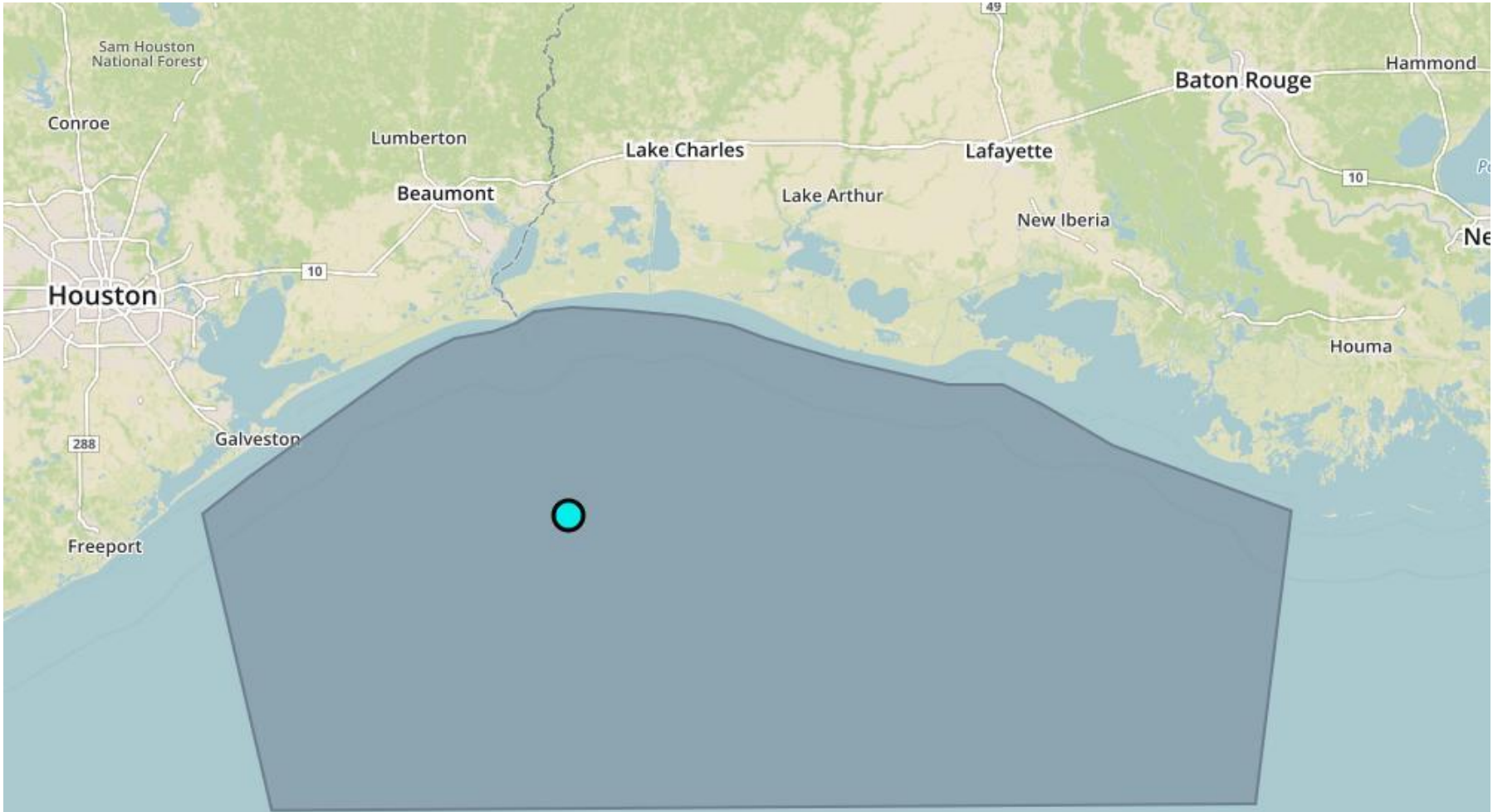
**A WDT Marine Fog Advisory has been issued for Port of Beaumont & Port Arthur Fairway Anchor**

Good Day,



Port of Beaumont & Port Arthur Fairway Anchor  
WDT Marine Fog Advisory, expires at Saturday, February 10, 2018 8:00 am CST

A WeatherOps Forecaster has issued a WDT Marine Fog Advisory for WGMA's Port of Beaumont & Port Arthur Fairway Anchor at Friday, February 9, 2018 7:40 am CST through Saturday, February 10, 2018 8:00 am CST. [Monitor in real-time on WeatherOps Map for WGMA.](#)



[forecaster@weatherops.com](mailto:forecaster@weatherops.com)

© Weather Decision Technologies, Inc.

**Sea fog leading to reduced visibility possible**

Threat Timing - 6:00 PM Friday through 8:00 AM Saturday

Primary Impacts:

Visibility - Less than 2.0 nm

With a gentle to moderate breeze in the region and temperatures falling to near the dewpoint over the waters, sea fog will have the potential to develop Friday evening into Saturday morning. Visibility of less than 2.0 nm will be possible.

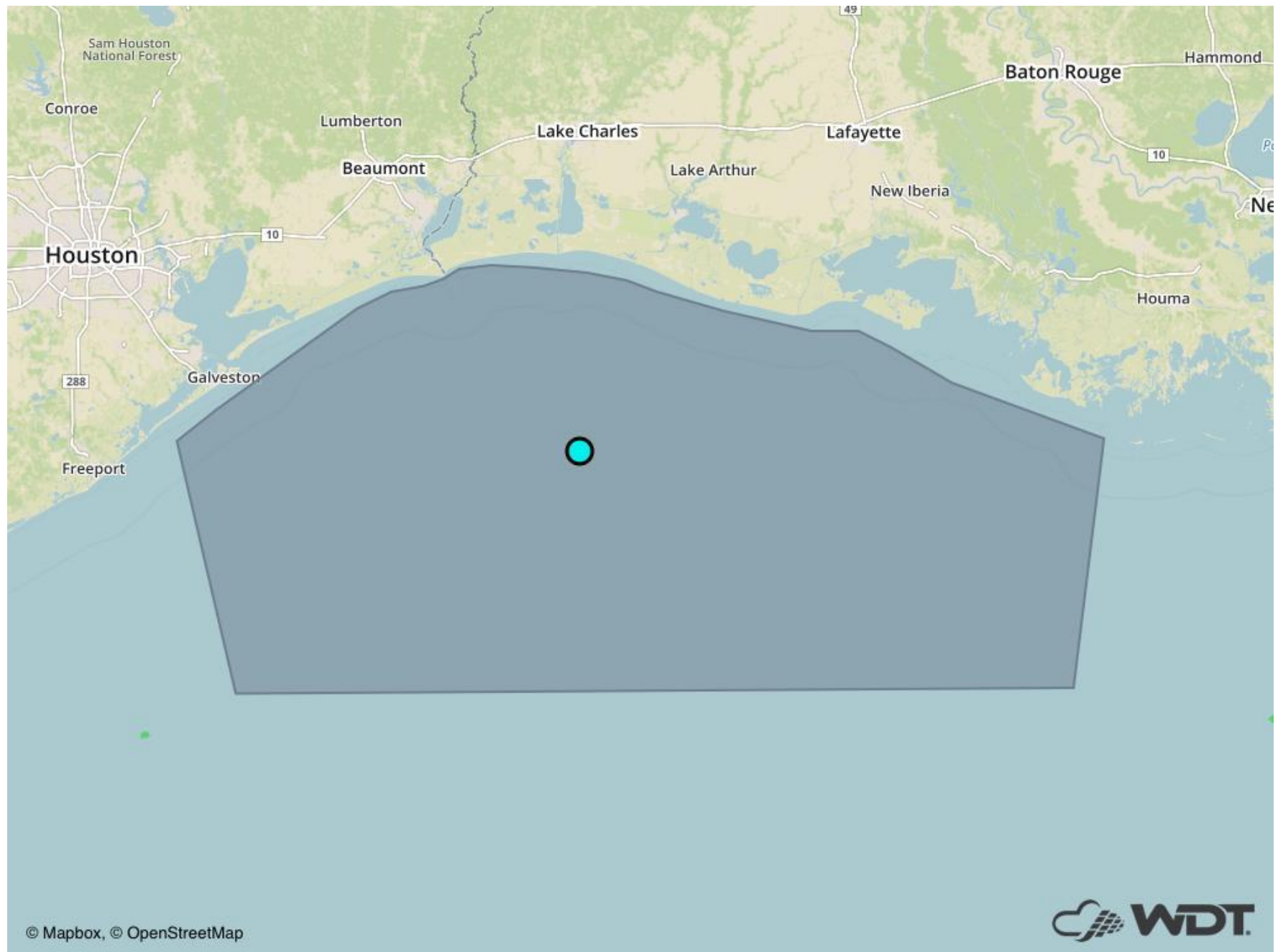
**A WDT Marine Fog Advisory has been issued for Port of Lake Charles Fairway Anchorage**

Good Day,



Port of Lake Charles Fairway Anchorage  
WDT Marine Fog Advisory, expires at Saturday, February 10, 2018 8:00 am CST

A WeatherOps Forecaster has issued a WDT Marine Fog Advisory for WGMA's Port of Lake Charles Fairway Anchorage at Friday, February 9, 2018 7:40 am CST through Saturday, February 10, 2018 8:00 am CST. [Monitor in real-time on WeatherOps Map for WGMA.](#)



[forecaster@weatherops.com](mailto:forecaster@weatherops.com)

© Weather Decision Technologies, Inc.

**Sea fog leading to reduced visibility possible**

Threat Timing - 6:00 PM Friday through 8:00 AM Saturday

Primary Impacts:

Visibility - Less than 2.0 nm

With a gentle to moderate breeze in the region and temperatures falling to near the dewpoint over the waters, sea fog will have the potential to develop Friday evening into Saturday morning. Visibility of less than 2.0 nm will be possible.

**A WDT Marine Fog Advisory has been issued for Galveston Anchorage**

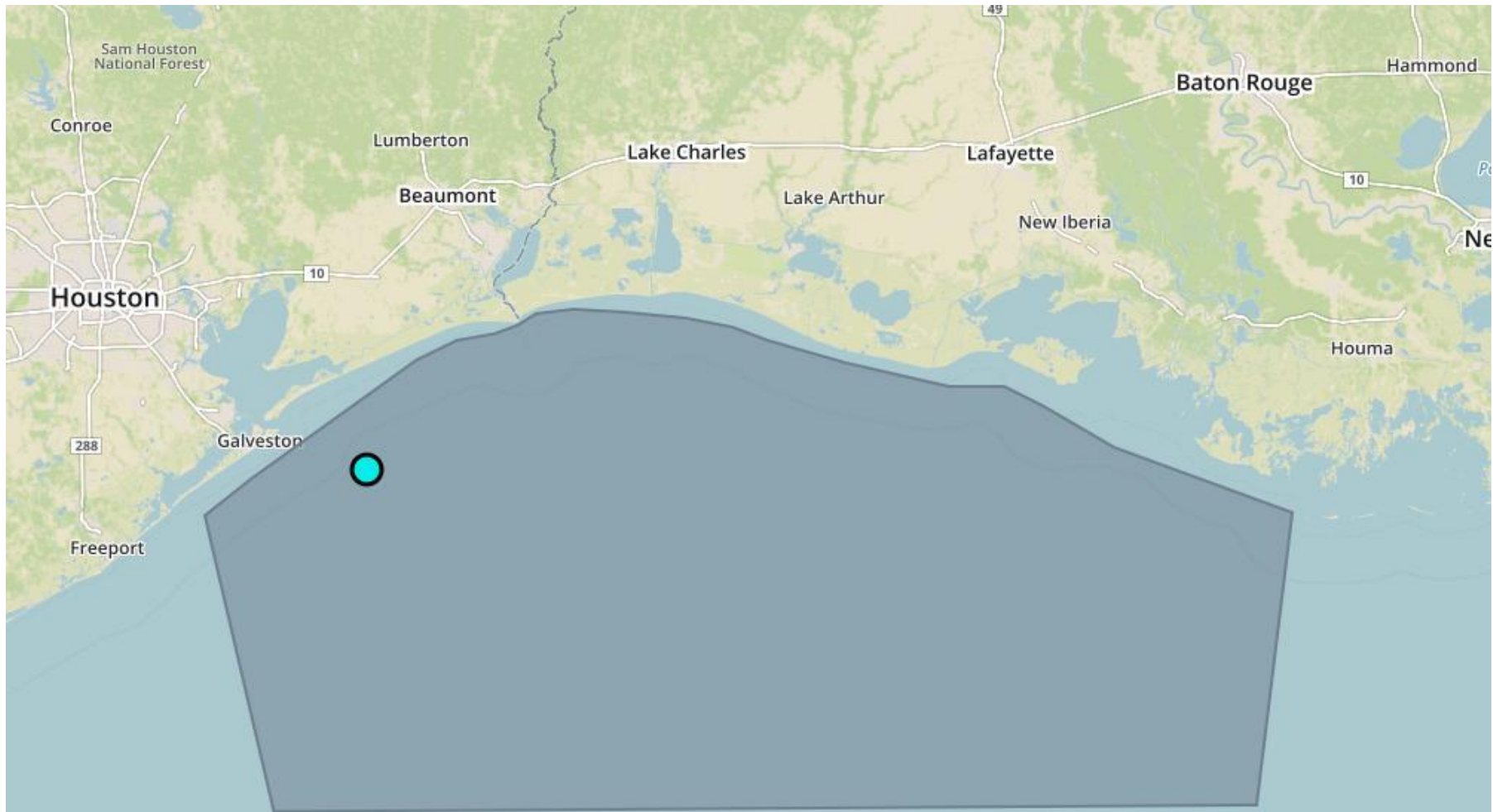
Good Day,



**Galveston Anchorage**

**WDT Marine Fog Advisory, expires at Saturday, February 10, 2018 8:00 am CST**

A WeatherOps Forecaster has issued a WDT Marine Fog Advisory for WGMA's Galveston Anchorage at Friday, February 9, 2018 7:40 am CST through Saturday, February 10, 2018 8:00 am CST. [Monitor in real-time on WeatherOps Map for WGMA.](#)





[forecaster@weatherops.com](mailto:forecaster@weatherops.com)

© Weather Decision Technologies, Inc.

**Sea fog leading to reduced visibility possible**

Threat Timing - 6:00 PM Friday through 8:00 AM Saturday

Primary Impacts:

Visibility - Less than 2.0 nm

With a gentle to moderate breeze in the region and temperatures falling to near the dewpoint over the waters, sea fog will have the potential to develop Friday evening into Saturday morning. Visibility of less than 2.0 nm will be possible.